

**THE MSUNDUZI  
LOCAL MUNICIPALITY**

**AREA  
(KWAZULU NATAL/  
UMGUNGUNDLOVU DM)**

**DRAFT ASHBURTON LAND USE  
SCHEME MAP**

**Legend**

 Project Boundary

**Land Use Zone**

 Active Public Open Space

 Agriculture 2

 Commercial

 Equestrian Residential 1

 Existing Road and Lane

 Intermediate Residential

 Light Industry

 Low Impact Mixed Use

 Municipal and Government

 Passive Public Open Space

 Private Open Space

 Protected Area 1

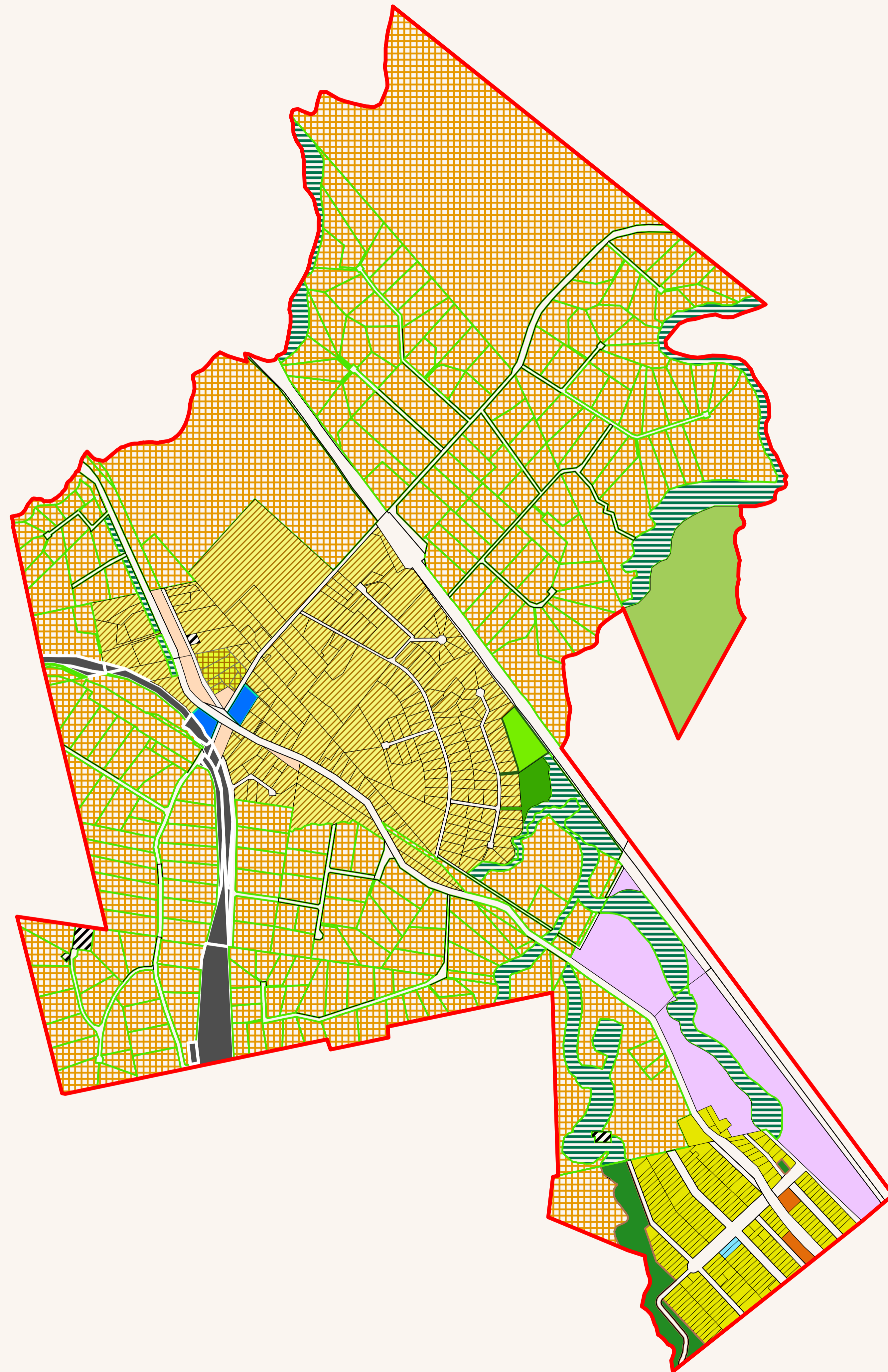
 Railway Purposes

 Special Residential 1A

 Special Residential 2A

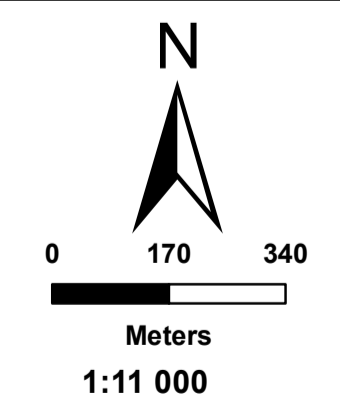
 Special Residential 3A

 Utilities and Services 1



SOURCE:  
Msunduzi Municipality  
ARC GIS

1:11 000



Map Reference  
LUS/06/18/ASH

Prepared By  
**SIVEST**  
TOWN PLANNING DIVISION

Date  
May 2018

\*COPYRIGHT IS VESTED IN SIVEST IN TERMS OF THE COPYRIGHT ACT (ACT 98 OF 1978) AND NO USE OR REPRODUCTION OR DUPLICATION THEREOF MAY OCCUR WITHOUT THE WRITTEN CONSENT OF THE AUTHOR\*

THIS MAP HAS BEEN PREPARED UNDER THE CONTROLS ESTABLISHED BY THE SIVEST QUALITY MANAGEMENT SYSTEM AND MEETS THE REQUIREMENTS OF THE SETA QUALITY GRADING SYSTEM THAT IS ISO COMPLIANT