

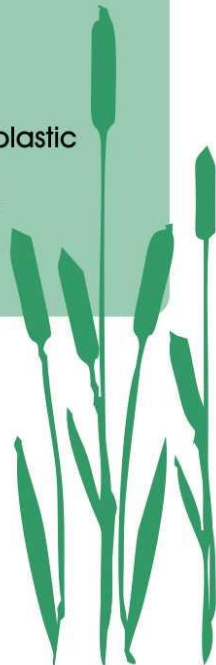
Please indicate which area/s of interest below which you would be prepared to assist in or contribute to. In addition please inform us of any other initiatives you would be prepared to undertake or contribute to if it is not listed below.

1. The Sponsorship of 5 local schools to participate in miniSASS stream assessment training at R5400 per school.  $R5400 \times 5 = R27\,000$
2. The Sponsorship of miniSASS stream assessment equipment for 5 local schools at R2245.80 per kit.  $R2245.80 \times 5 = R11\,229$
3. The Sponsorship of funds towards hard built infrastructure such as Gabions for River Embankment Stabilisation
4. The Sponsorship of funds for obtaining Environmental Authorisation for any required built infrastructure
5. The Sponsorship of funds for weekly or monthly advertisement of water quality monitoring results in the Natal Witness
6. Litter Clean-up in your area
7. River Clean-up along the Baynespruit Stream
8. Monitoring and Reporting pollution, illegal disposal of waste or illegal dumping sites in your area
9. Monitoring and Reporting Sewer related problems for example, the illegal dumping of waste into sewers or surcharging (over-flowing) sewers
10. Alien Plant Removal
11. Donation of Indigenous plants
12. Planting of Indigenous plants
13. Recycling household materials such as paper, plastic and glass
14. Adopt a spot of the Baynespruit stream; key biodiversity areas which are habitats for sensitive fauna and flora

Please respond to Mr. Rodney Bartholomew or Miss Esmeralda Ramburran via email or telephone (Contact details provided on the first page of this handout).

Your involvement, contribution and participation is welcomed and most appreciated. We look forward to working with you.

**THANK YOU**



# **BAYNESPRUIT**

## Rehabilitation Project

Aim: To Improve water quality of the Baynespruit so that surrounding communities benefit from a cleaner environment as well as cleaner water for irrigation, recreation and fishing.



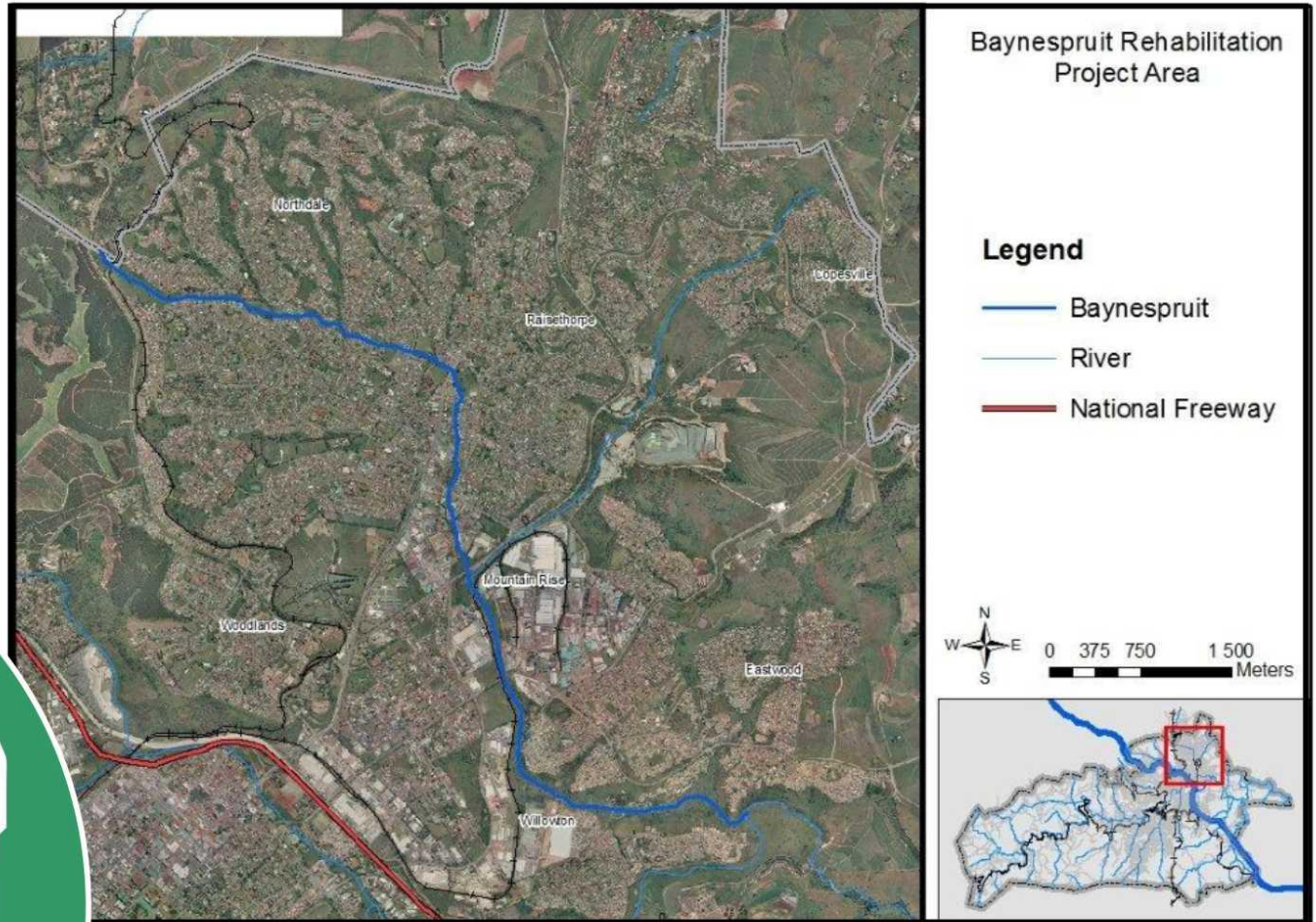


# THE BAYNESPRUIT STREAM

The Baynespruit stream traverses the Northdale, Willowton and Sobantu areas of Pietermaritzburg within the Msunduzi Municipality's jurisdiction.

The entire stream length of 9km is included in this project extending from the top of the catchment at Otto's Bluff Road to the confluence of the Msunduzi River. The Baynespruit is in notably poor condition due to surrounding contributors of pollution and industrial effluent as well as damaged infrastructure and solid waste.

We can improve water quality by; stopping the illegal dumping of litter and waste material, recycling and re-using waste, removing alien plants, planting indigenous trees, protecting wetlands, not polluting rivers with industrial effluent and raw sewerage and not constructing on river banks.



**KEEP A LOOK OUT IN YOUR AREA FOR WORK COMMENCING AND INVITATIONS FOR PUBLIC MEETINGS!  
WE INVITE YOU TO PARTICIPATE AND MAKE A DIFFERENCE.**

Should you have any queries, requests for further information or wish to respond to our appeal for assistance (see items listed on the back of this handout) please contact:

R. Bartholomew: (033) 392 3240

Rodney.Bartholomew@msunduzi.gov.za or

E. Ramburran: (033) 392 3625

Esmeralda.Ramburran@msunduzi.gov.za

