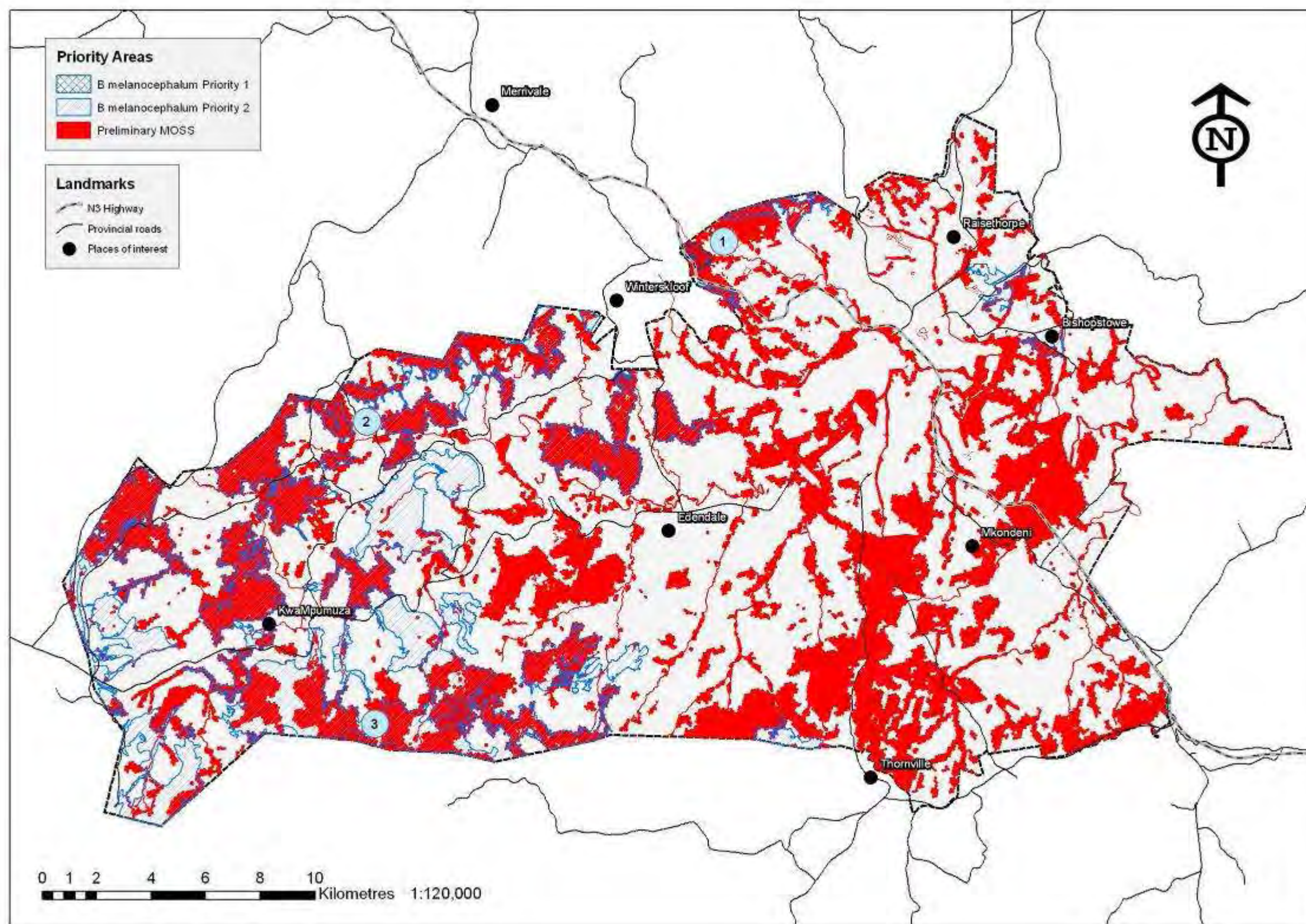
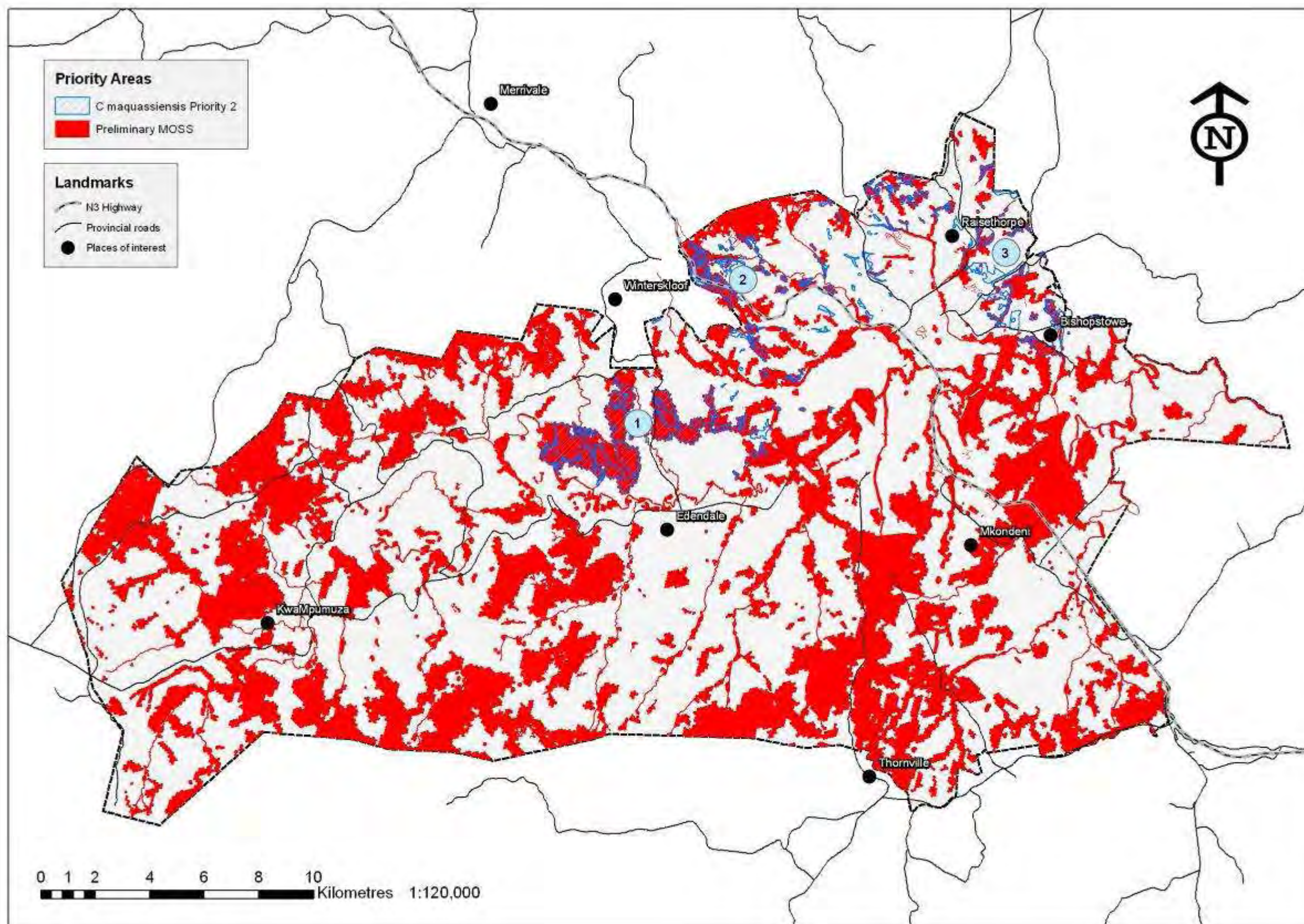


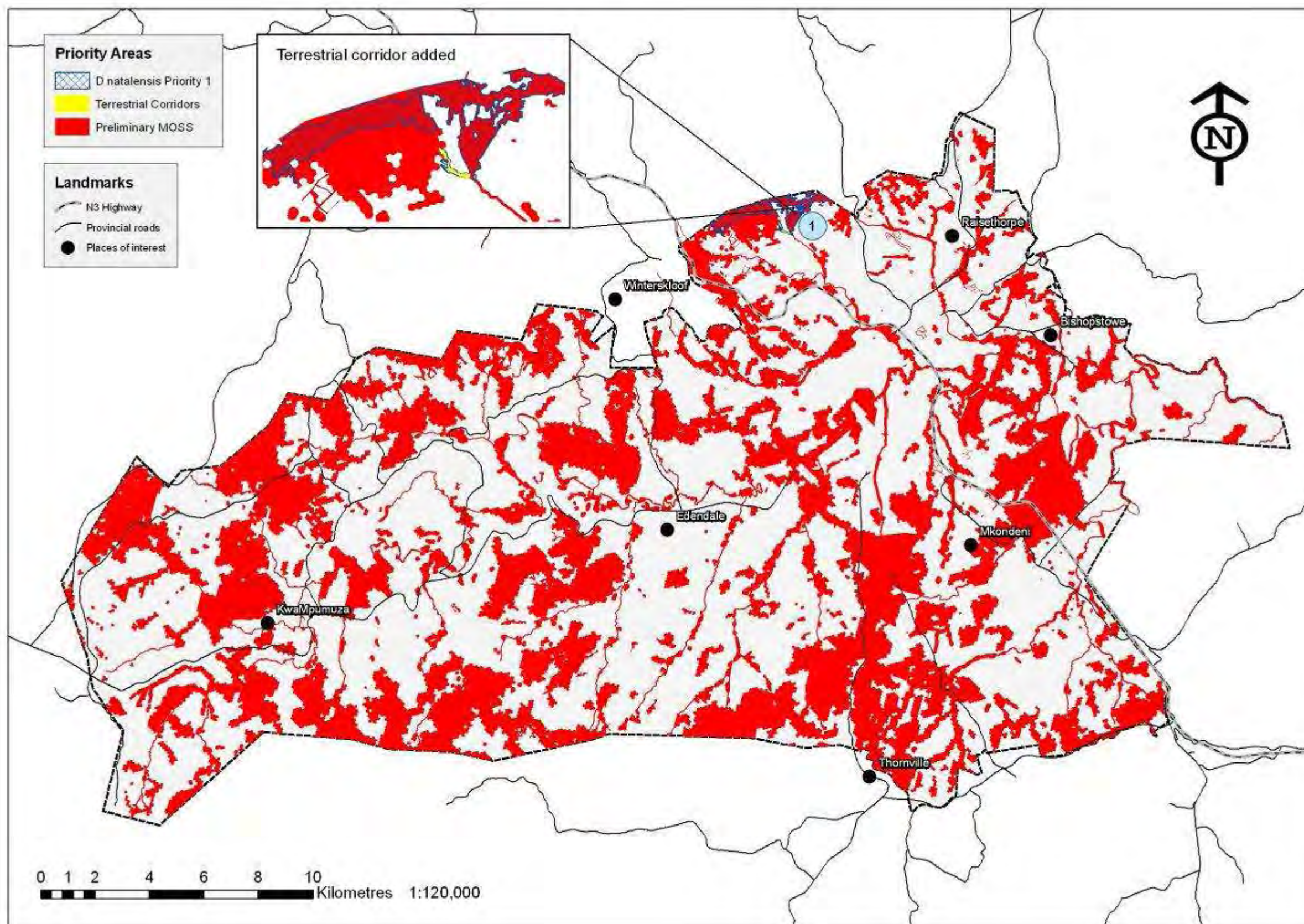
Annexure2. Species distribution maps used to assess the need for additional terrestrial corridors for priority species.



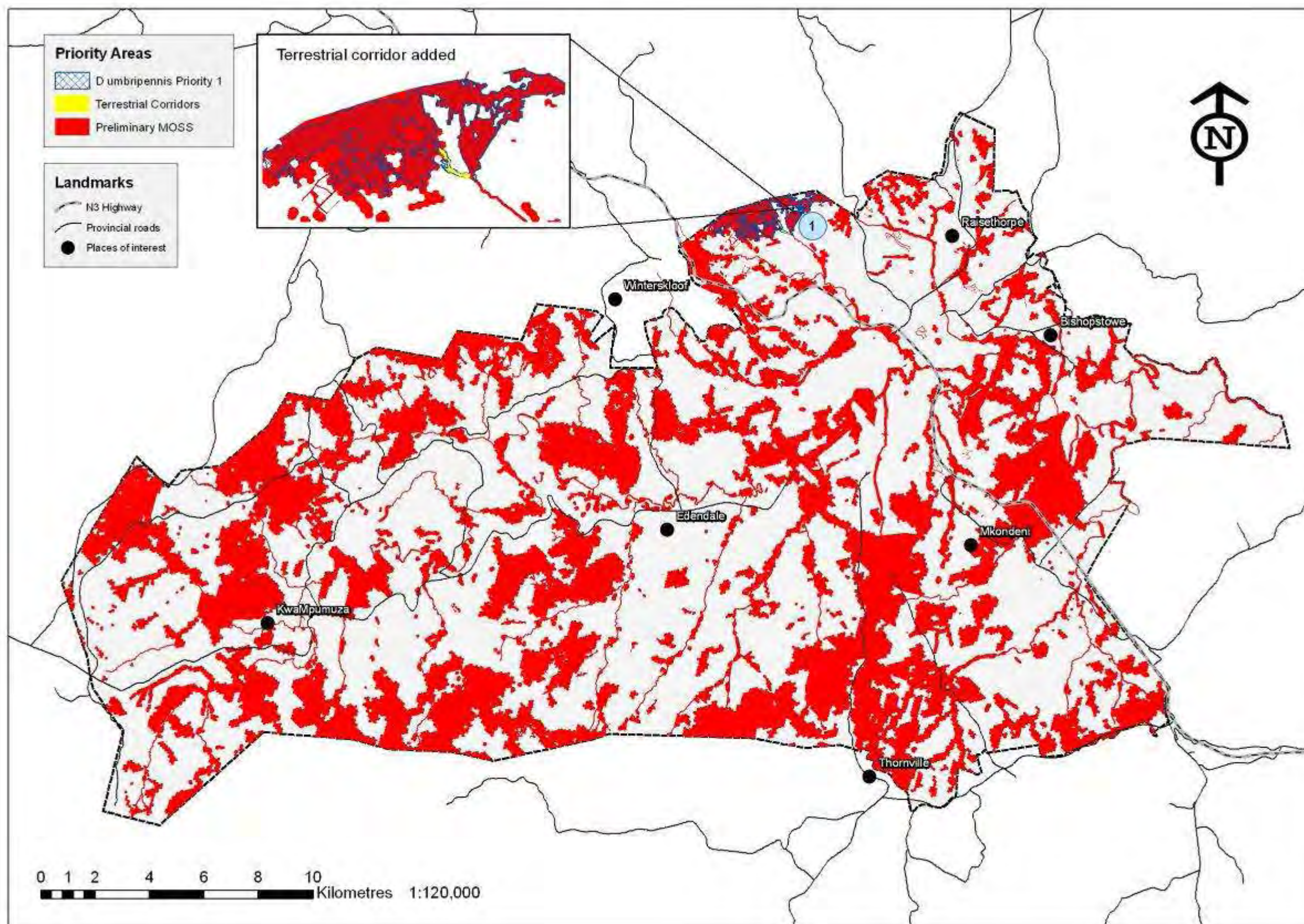
Map 1: Location of priority areas for the conservation of *Bradypodion melanocephalum* in relation to the preliminary ESP (excluding POS).



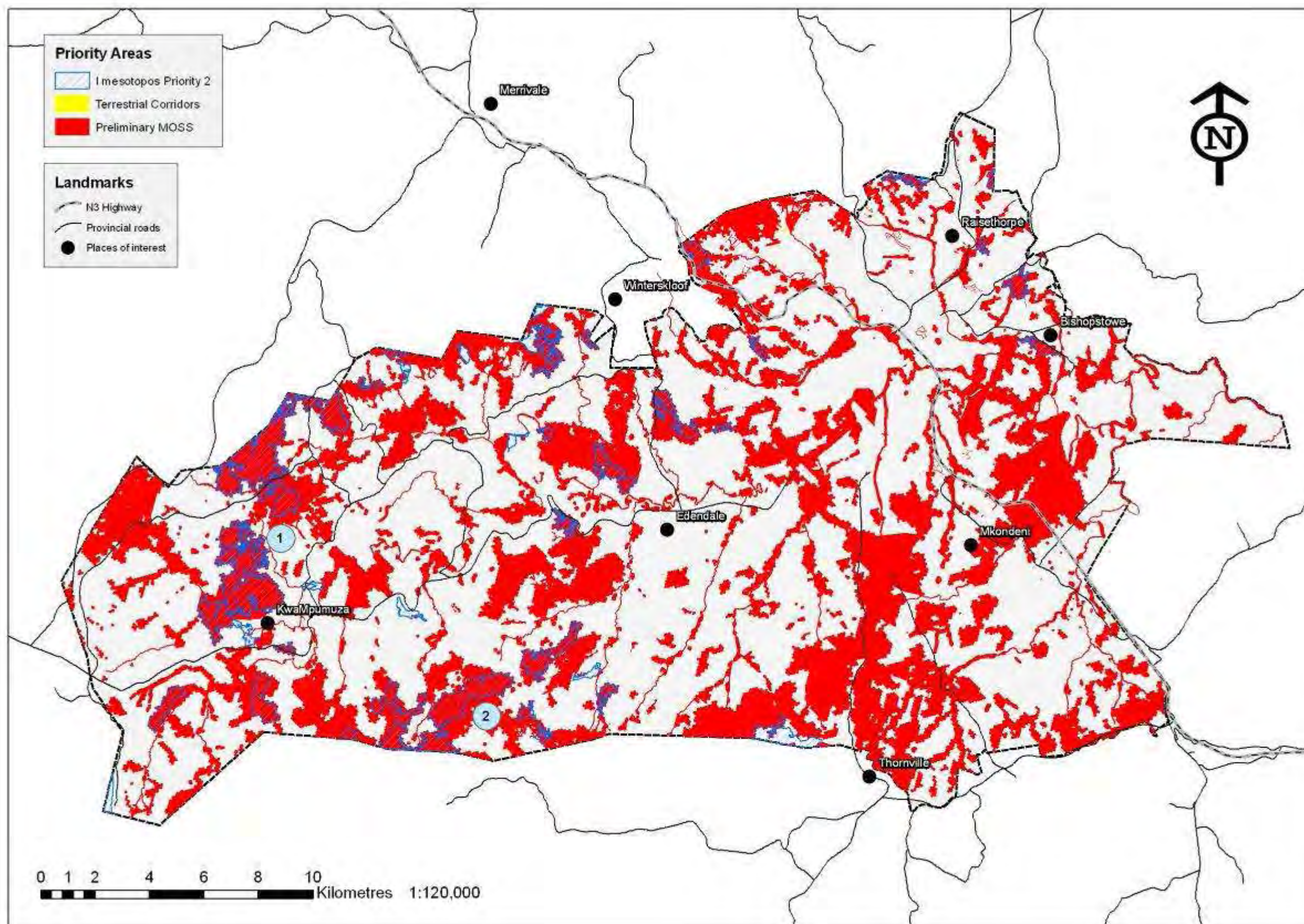
Map 2: Location of priority areas for the conservation of *Crocidura maquassiensis* in relation to the preliminary ESP (excluding POS).



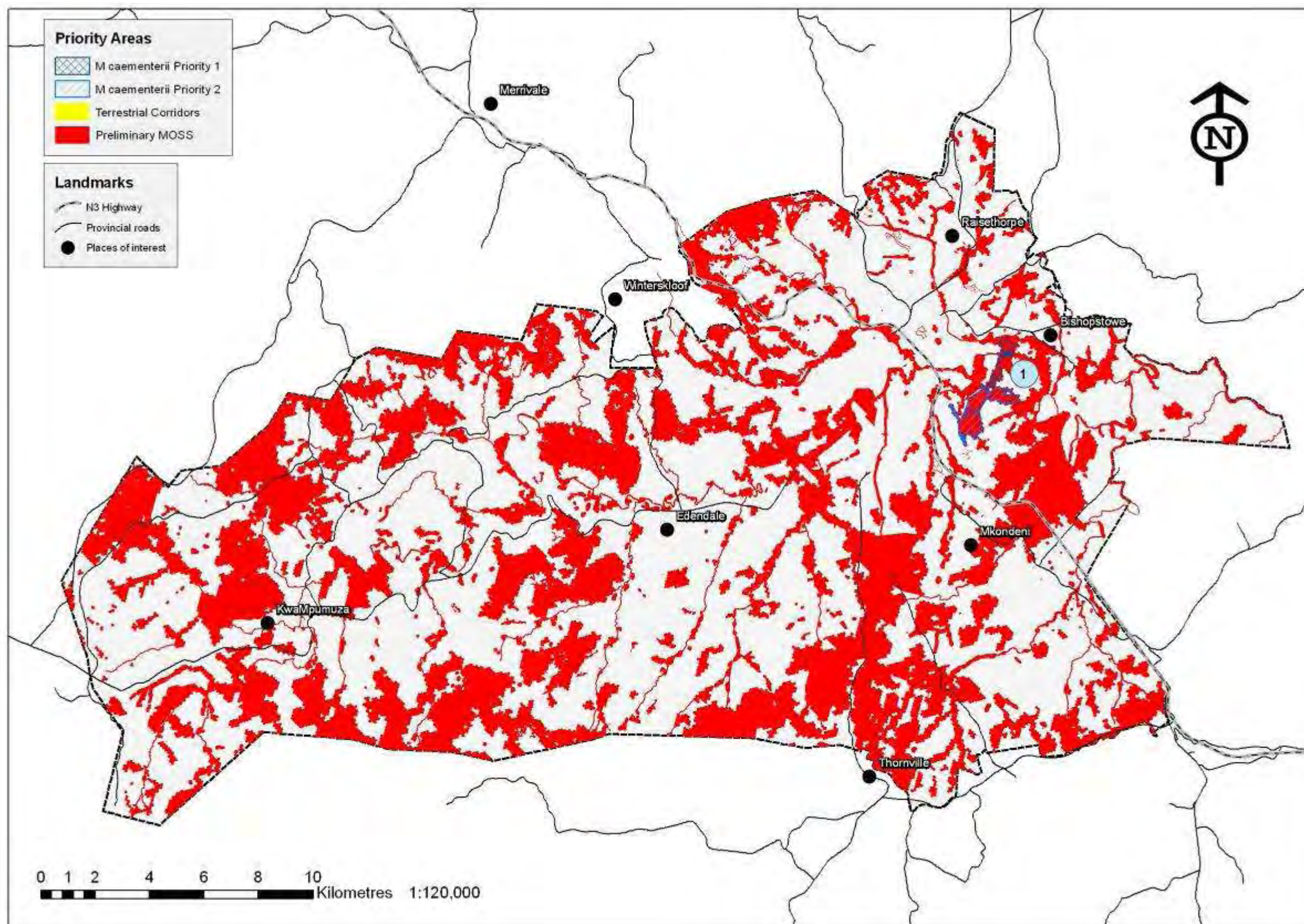
Map 3: Location of priority areas for the conservation of *Dasophrys natalensis* in relation to the preliminary ESP (excluding POS).



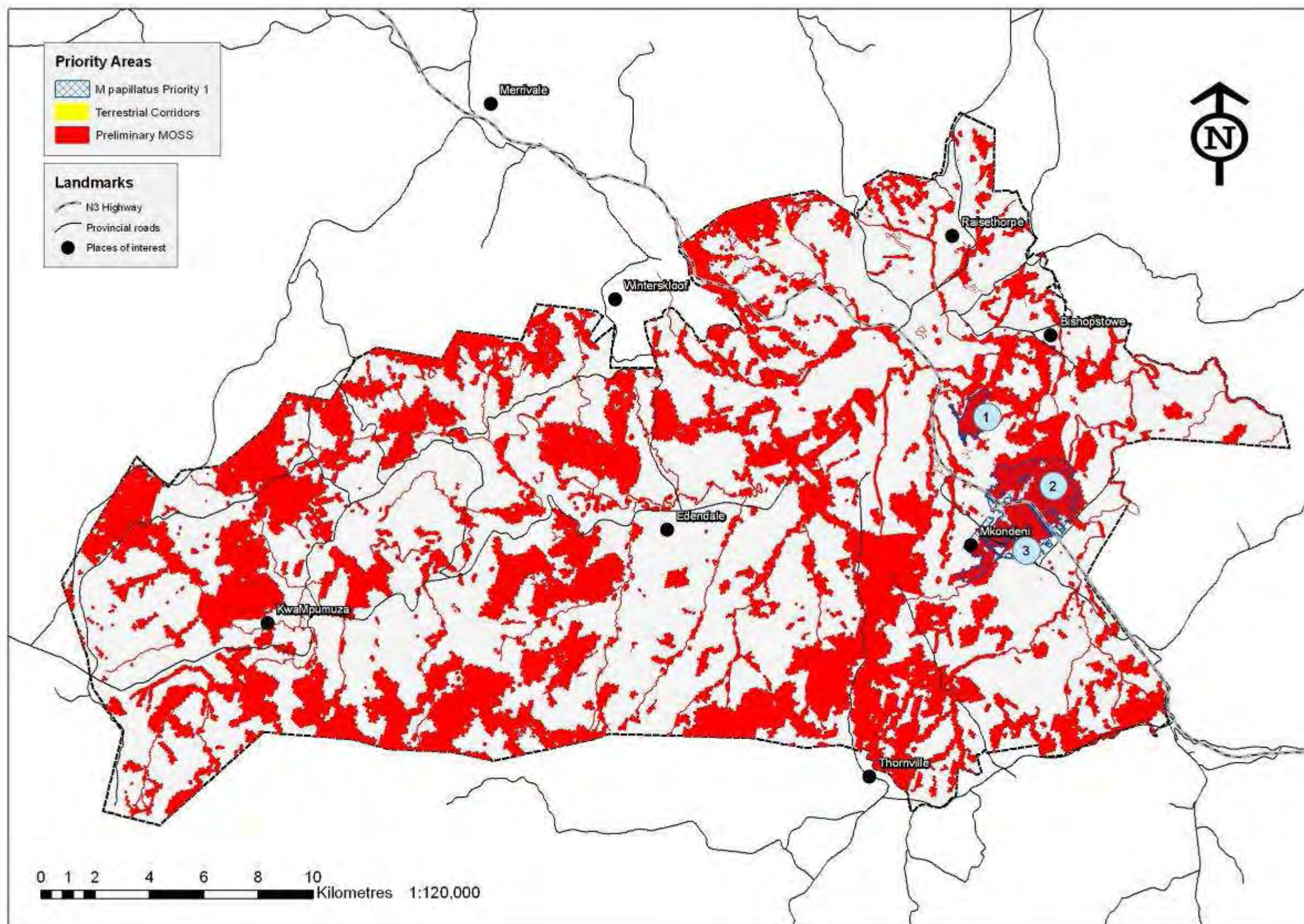
Map 4: Location of priority areas for the conservation of *Dasophrys umbripennis* in relation to the preliminary ESP (excluding POS).



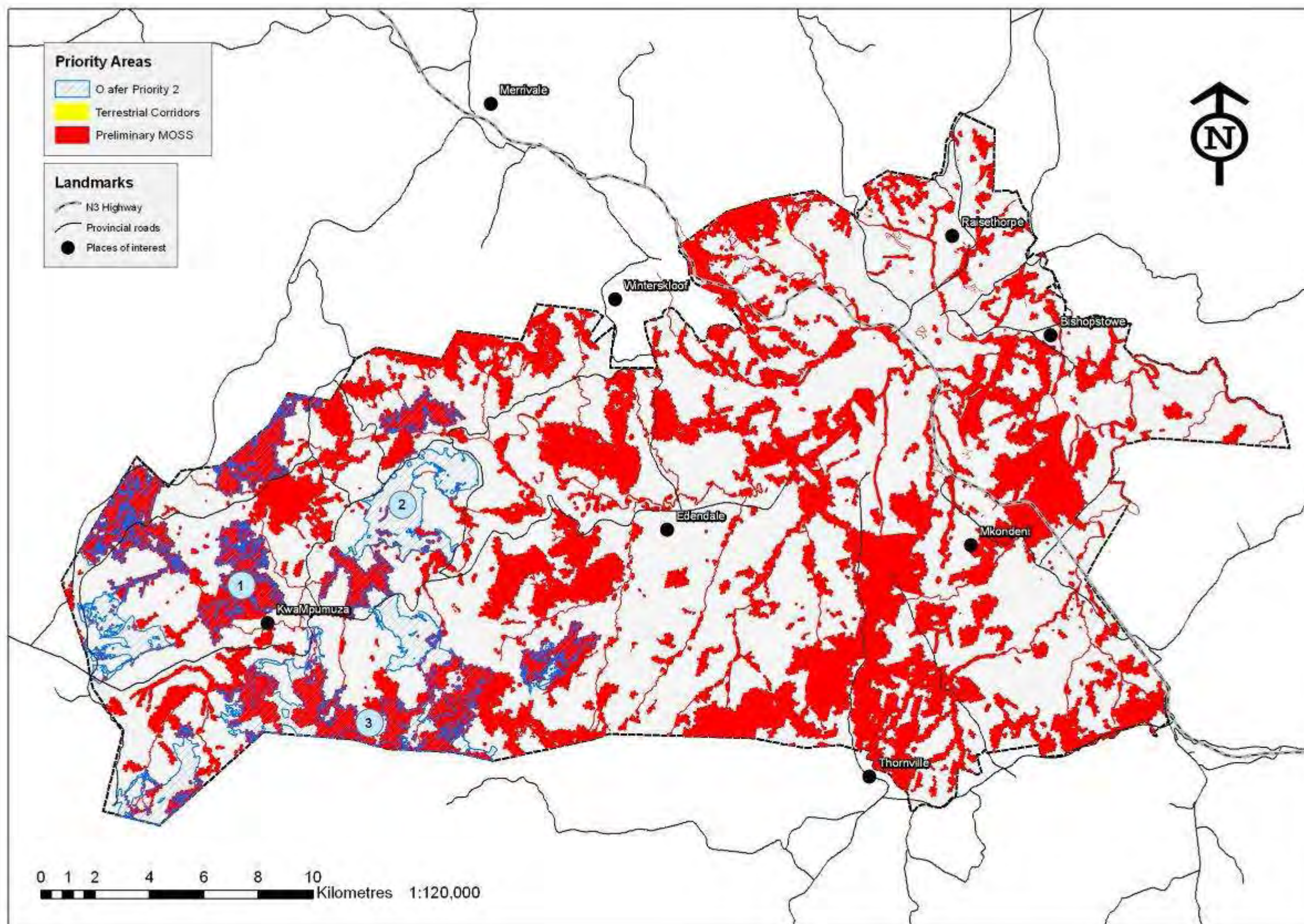
Map 5: Location of priority areas for the conservation of *Ischiolobos mesotopos* in relation to the preliminary ESP (excluding POS).



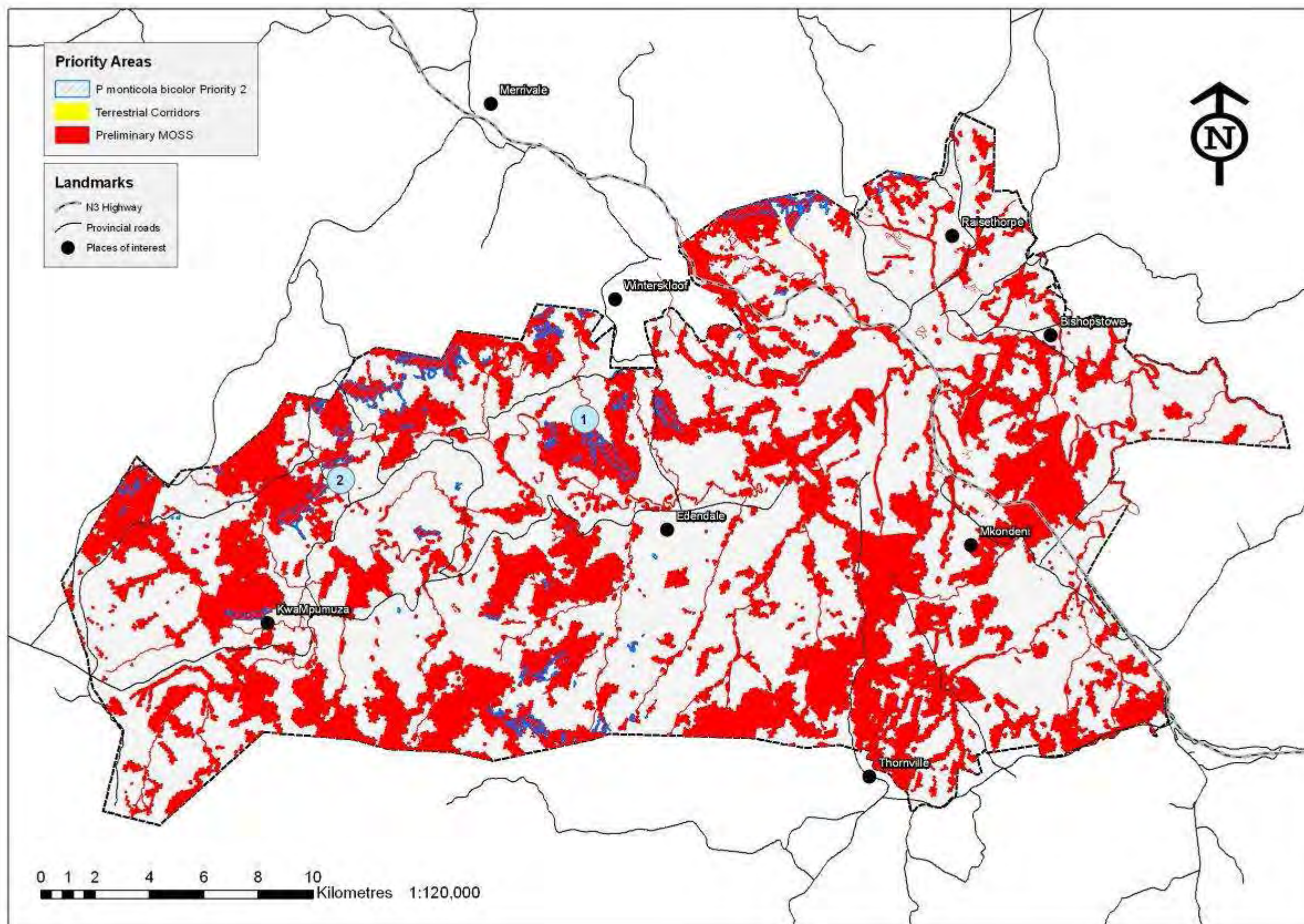
Map 6: Location of priority areas for the conservation of *Microchaetus caementarii* in relation to the preliminary ESP (excluding POS).



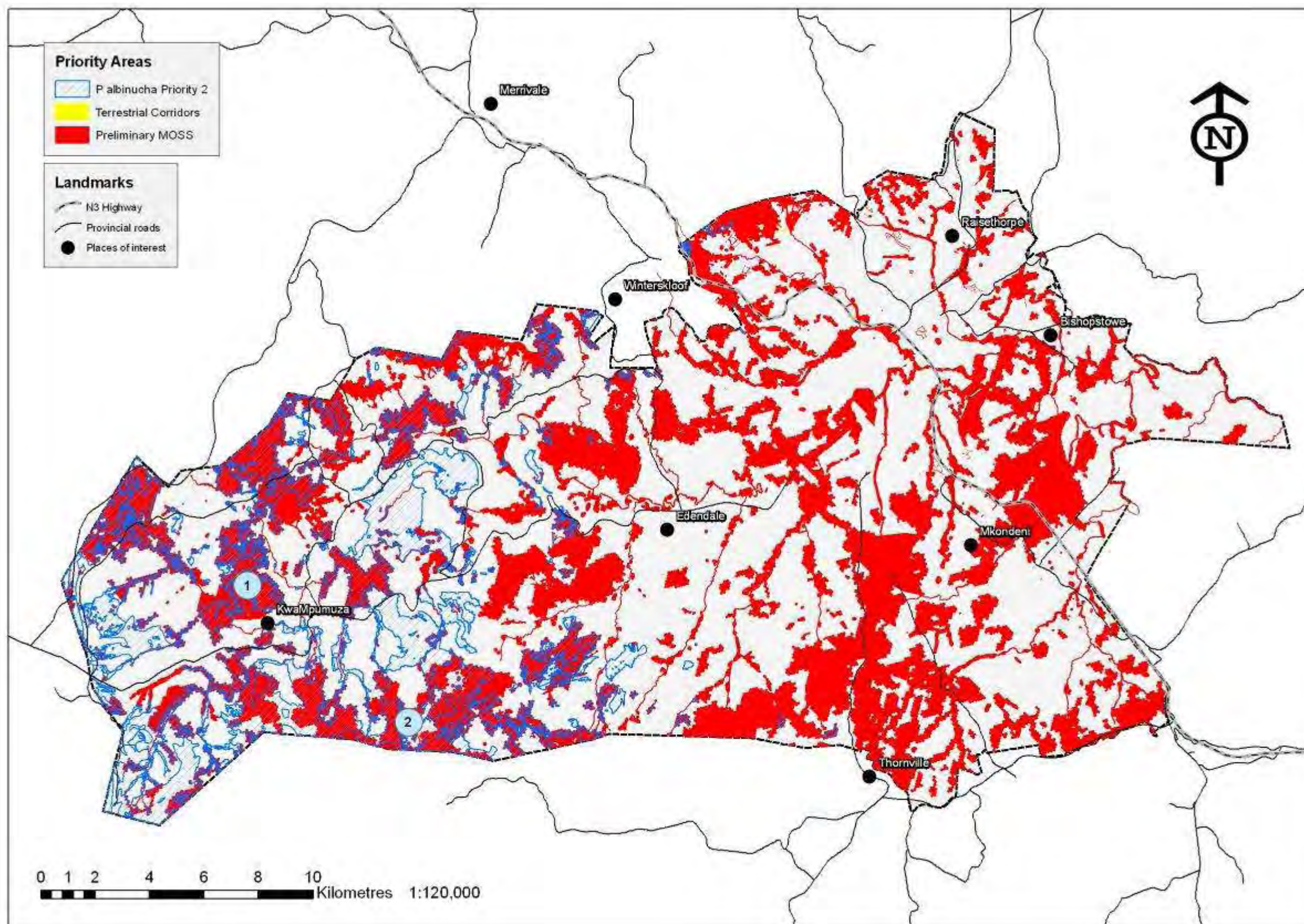
Map 7: Location of priority areas for the conservation of *Microchaetus papillatus* in relation to the preliminary ESP (excluding POS).



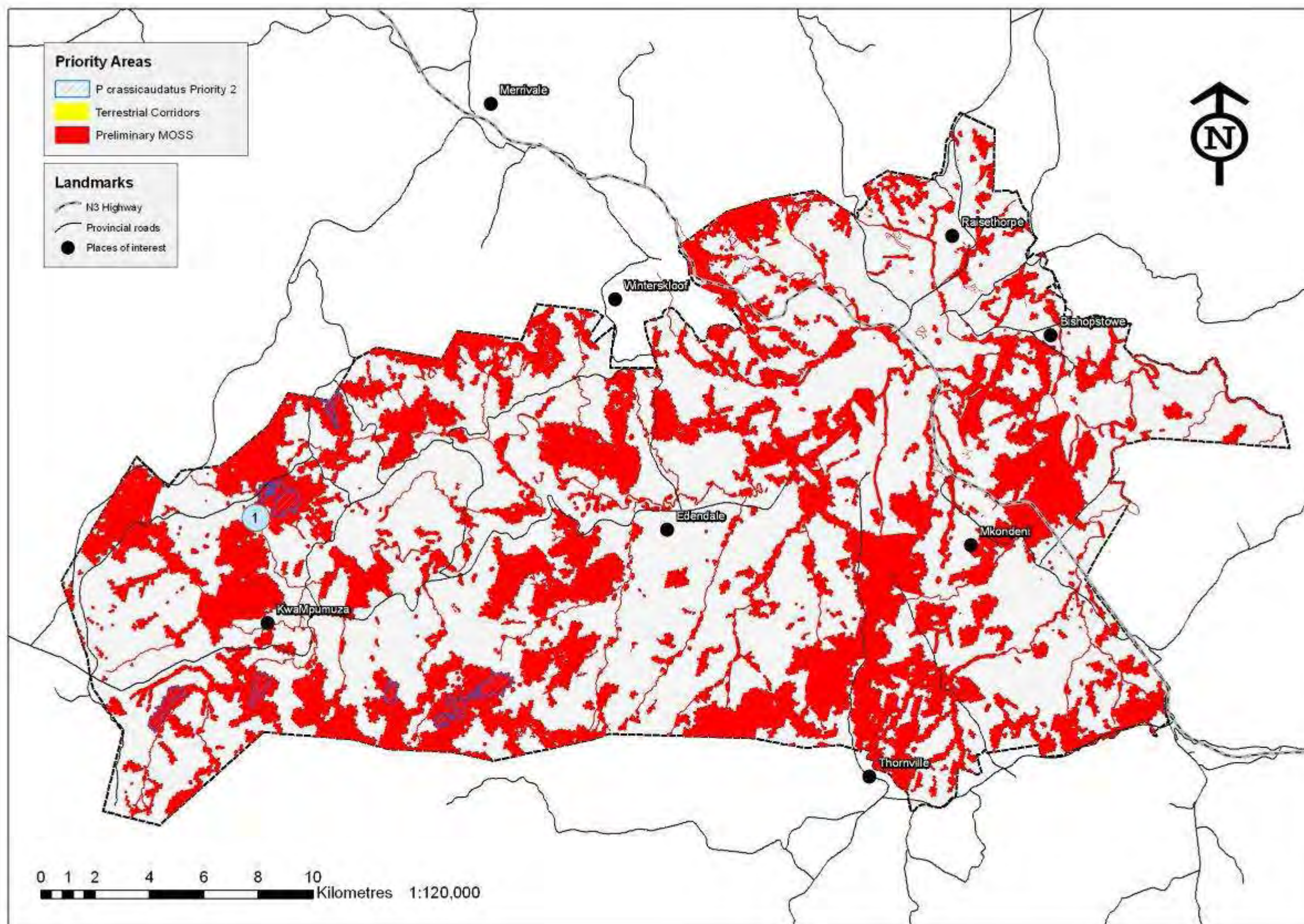
Map 8: Location of priority areas for the conservation of *Orycteropus afer* in relation to the preliminary ESP (excluding POS).



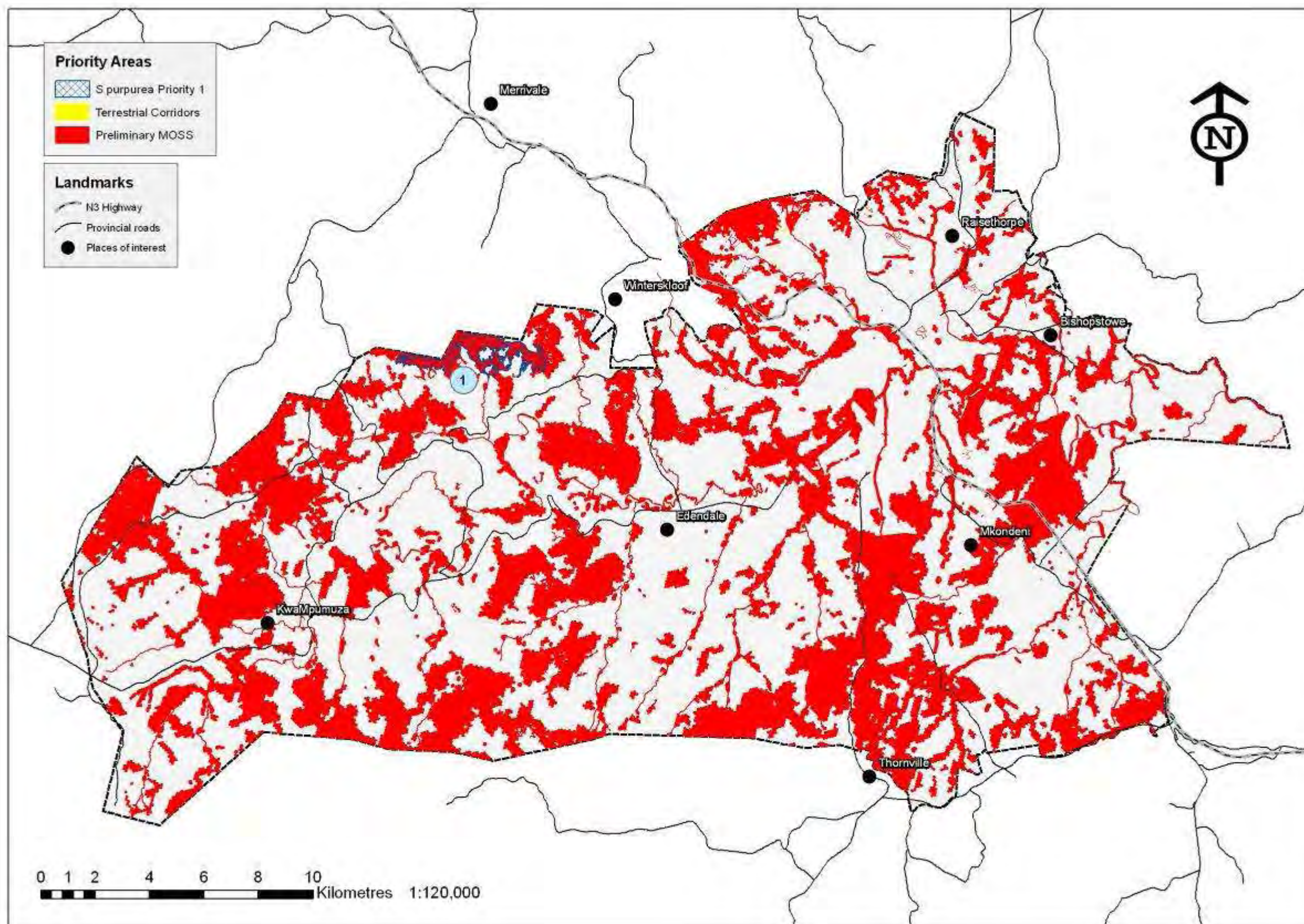
Map 9: Location of priority areas for the conservation of *Philantomba monticola bicolor* in relation to the preliminary ESP (excluding POS).



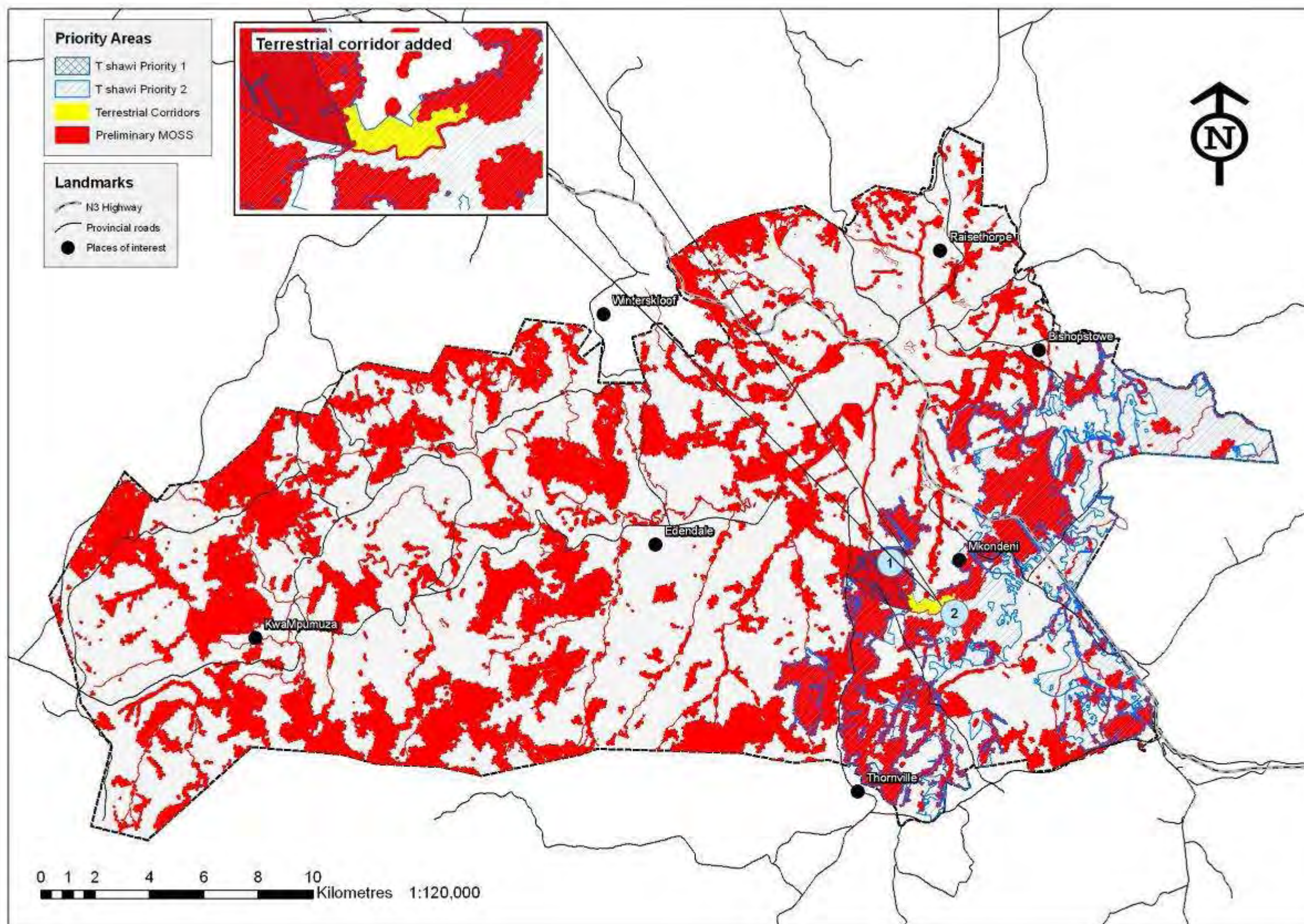
Map 10: Location of priority areas for the conservation of *Poecilogle albinucha* in relation to the preliminary ESP (excluding POS).



Map 11: Location of priority areas for the conservation of *Pronolagus crassicaudatus* in relation to the preliminary ESP (excluding POS).



Map 12: Location of priority areas for the conservation of *Stagira purpurea* in relation to the preliminary ESP (excluding POS).



Map 13: Location of priority areas for the conservation of *Tritogenia shawi* in relation to the preliminary ESP (excluding POS)

Appendix 2: Environmental Services Plan – Identification of Social Criteria