

ISAZISO SOMPHAKATHI

UMASIPALA WAKWA MSUNDUZI ISIMEMO SOKUBAMBA IQHAZA KOMPHEKATHI IDRAFT SPATIAL DEVELOPMENT FRAMEWORK

UMasipala Wendawo uMsunduzi, ngalokhu unikeza isaziso ngokomthetho o kuMunicipal Systems Act (Act 32 of 2000)(MSA), ofundwe ngokuhlanganyela nesigaba 20 komthetho o kuSpatial Planning and Land Use Management Act (Act 16 of 2013) (SPLUMA) kanye nomthetho kaMasipala waseMsunduzi o ku Spatial Planning and Land Use Management By-Law, ukuthi uMasipala usezinhlelweni zokubuyekeza iSpatial Development Framework (i-SDF).

I-SDF ngumbhalo wokuhlela amasu wesikhathi eside okhombisa ngokwendawo indlela efunwa ngumasipala yokukhula nentuthuko, enikezwe ngemigomo ebekwe esigabeni 7 se-SPLUMA. I-SDF ikhanyisa ngokwendawo umbono, izinhloso nezinjongo ze-IDP. Uma isiphothuliwe, i-SDF izovunywa ngokwe-MSA futhi izosebenza ukuhola ukuthathwa kwezinqumo zentuthuko nokuhlelwa kokusetshenziswa komhlaba.

Ngokuya ngezinhlinzeko zesahluko 4 se-MSA, uMasipala waseMsunduzi usuqalile ngenqubo yokubamba iqhaza komphakathi futhi ngalokhu umema umphakathi kanye nawo wonke amaqembu anentshisekelo nathintekayo ukuthi anikeze imibono ebhaliwe kusuka mhla ka **27 kuNtulikazi 2021 kuya kumhlaka 28 kuMandulo 2021 ngezikhathi zomsebenzi (08h00 - 16h00)**. Yonke imibono noma imibuzo ephathelene nohlaka lwe-SDF kumele ibhekiswe kuJane Perumal noma kuPhilasande Zondi futhi ithunyelwe ngale ndlela elandelayo:

- Nge-imeyili: jane.perumal@msunduzi.gov.za noma philasande.zondi@msunduzi.gov.za; noma
- Qonda emahhovisi kaMasipala **eSustainable Development and City Enterprise Department (Town Planning Department), 5th Floor, Professor Nyembezi Building, 341 Church Street, Pietermaritzburg**, noma
- Ngokuthunyelwa ngeposi kwa-**Private Bag X 1393, eMgungundlovu, 3200**, ungakadluli umhlaka **28 kuMandulo 2021**.

Ikhophi ye-SDF esalungiswa ingatholakala ngekhompyutha kuwebhusayithi yethu engu:

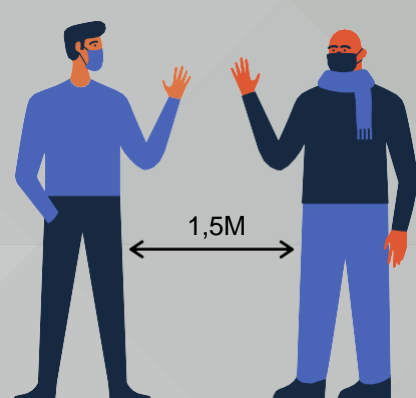
<http://www.msunduzi.gov.za/site/town-planning/index.html>

Ikhophi ephathekayo yohlaka lwe-SDF nayo iyatholakala ukuze ihlolwe ngezikhathi zomsebenzi **(08h00 -16h00)** e**Sustainable Development and City Enterprise Department (Town Planning Department), 5th Floor, Professor Nyembezi Building, 341 Church Street, Pietermaritzburg**.

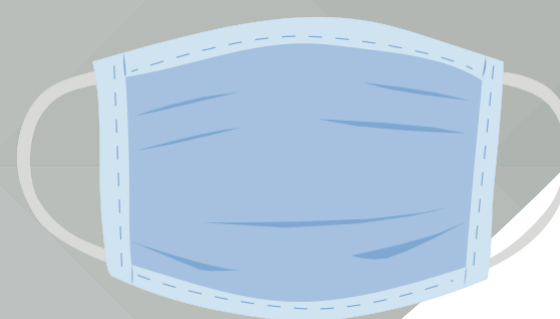
Uma unemibuzo, shayela ucingo ku-**033 392 2426/ 033 392 3680**.



SEBENZISA ISIBULALI MAGCIWANE



QAPHELA UKUSHIYA IBANGA ELINGU 1,5 MITHA PHAKATHI KWAKHO NOMUNYE UMUNTU



QIKELELA UKUFAKA ISIFONYO SAKHO NGASO SONKE ISIKHATHI



GEZA IZANDLA ZAKHO NGAMANZI NENSIPHO