

5 June 2014

Public Meeting to Present and Discuss the Draft Planning and Development Framework

The Msunduzi Municipality is inviting interested and affected parties to a public meeting to present and discuss the draft Planning and Development Framework prepared for the **Central Area and CBD Extension Node Local Area Plan (LAP)** project. The purpose of the Public Meeting is to present the draft Planning and Development Framework to interested and affected parties and to share with them the draft proposals with respect to land use, transport, infrastructural and environmental planning for the area. It is an opportunity for the public to provide input into the process to inform the finalisation of the Local Area Plan for the area.

The public meeting will include a presentation by the project consultants with time after for discussion and engagement with officials and the project consultants has been scheduled for:

DATE: Thursday 5 June 2014
TIME: 17:30 to 19:30
VENUE: Msunduzi City Hall

Following the public meeting, written submissions can be made on the draft framework up until 20 June 2014. All written submissions will be considered as part of the finalisation of the LAP. Comments can be emailed to: msunduzi2013@gmail.com

Documents can be downloaded from:
<http://www.msunduzi.gov.za/site/spartial-dev-framework>

For further enquires, please contact the Msunduzi Project Manager:
Jane Perumal on 033-392 2426, email jane.perumal@msunduzi.gov.za

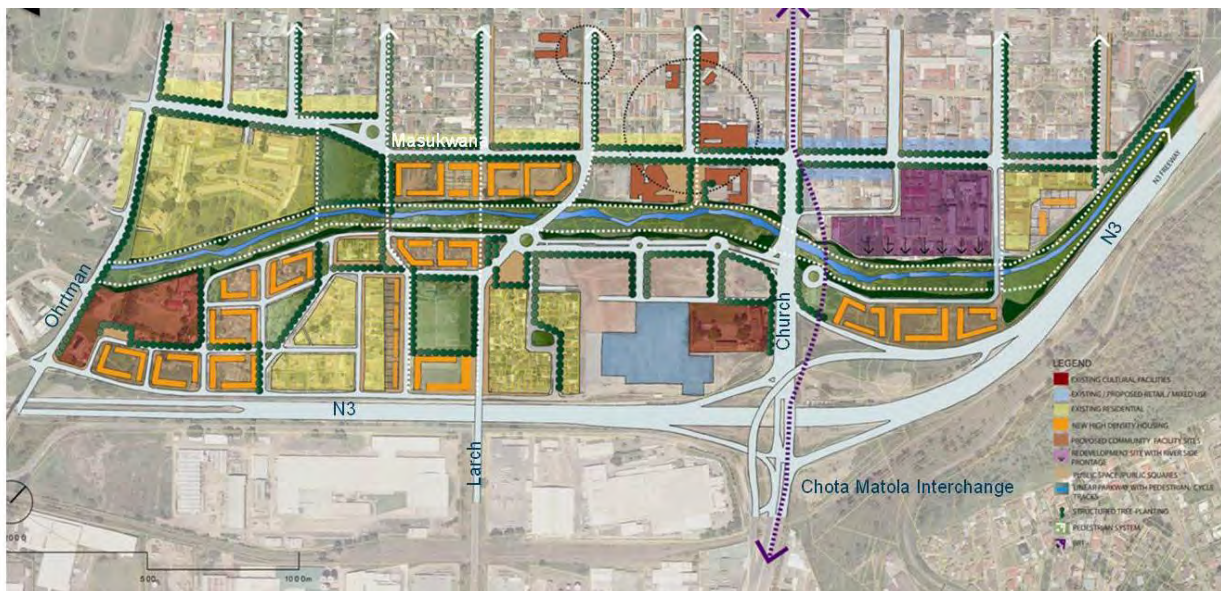
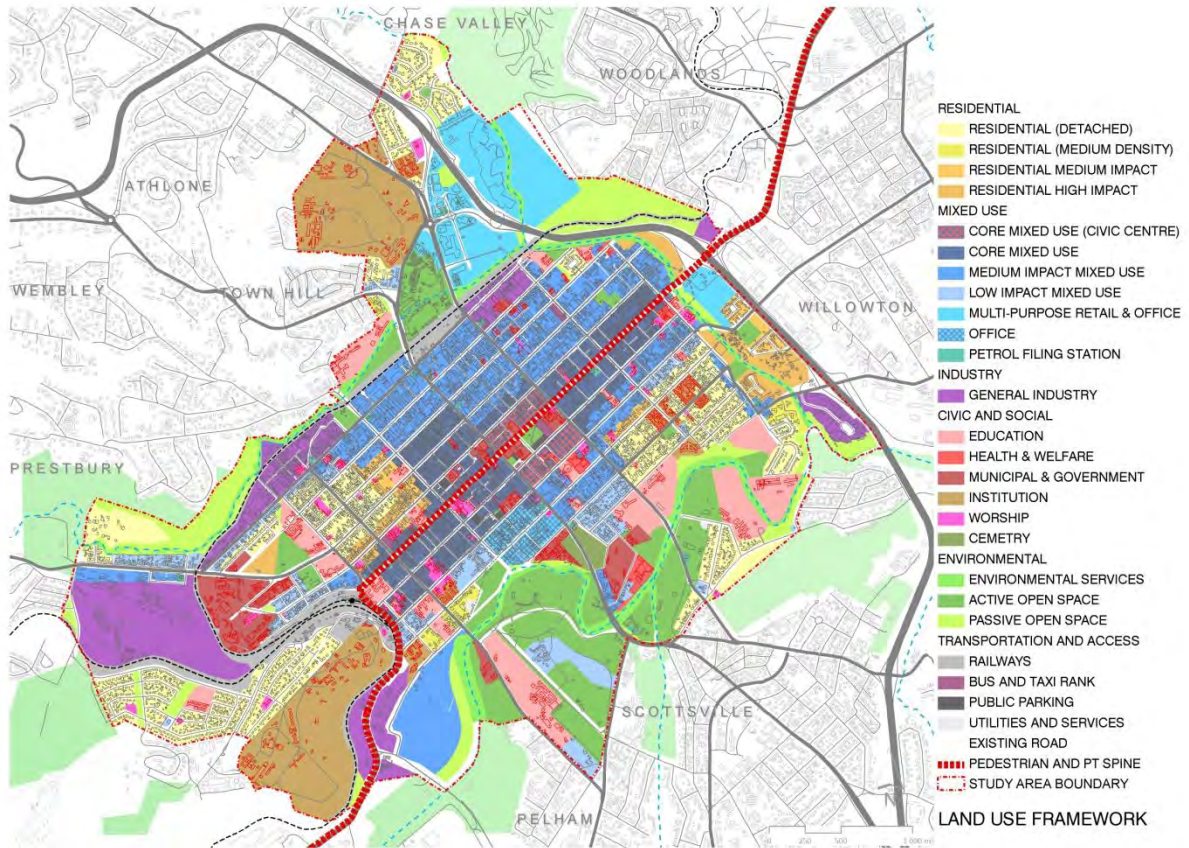
Regenerating the CBD of Pietermaritzburg

The Integrated Planning and Development Unit of Royal HaskoningDHV are delighted to have been appointed by the Msunduzi Municipality to assist with the **Preparation of a Local Area Plan for the Central Area and CBD Extension Node**. The Msunduzi Municipality (MM) has recognised that significant change has, and will continue to occur, in and around the Msunduzi CBD and central area, which is a critical regional hub along the primary N3 economic corridor of the country, and accordingly, it needs to review and amend its Central Area and CBD Planning so that this primary provincial development node can effectively perform its role as the economic and administrative hub of both the City and surrounding Region.

The draft Planning and Development Framework identifies the roles and a vision for the area and provides spatial frameworks for land use, transport, infrastructure, environment and urban design (see examples below), together with guidance in relation to implementation, monitoring and review. Some of the key proposals emanating from the draft Planning and Development Framework prepared for the Central Area and CBD Extension Node include:

- Moving away from a “business as usual” approach to urban management towards a greater focus on long term sustainability and urban resilience, with the municipality taking a lead role in guiding and directing the regeneration of the area, the improvement of urban performance and environmental quality and the delivery of catalytic projects.
- Improving urban management for the CBD to ensure that the area performs more effectively as the core social and economic hub of Msunduzi and to boost its attractiveness as a location for private investment and job creation.
- Reinforcing and enhancing the role of Msunduzi as the capital city of KZN and the importance of the civic and commercial heart of the area for city residents, businesses and visitors.
- Utilising the opportunities created by future public transport improvements to restructure the central area, to integrate land uses and transport, to improve the functioning and quality of urban places and the pedestrian environment, to increase connectivity to surrounding residential areas and to stimulate growth and investment.

- Retaining and enhancing the role of the open spaces, amenities, community and sporting facilities that form the frame to the central area, that support the urban, economic and social activities in the core and which provide an interface connecting the core with surrounding residential areas and districts.
- Focusing on the critical importance of implementing the plan in order to deliver on the social, economic and environmental objectives in the LAP, including through the alignment of stakeholders, the leveraging of investment, the release of appropriately located lands and the delivery of catalytic projects.



Central Area and CBD Extension Node LAP Comment Sheet

What elements within the draft Development Framework do you like/feel are positive and should be carried forward?

What elements do you dislike/feel should be removed or changed?

General Comments