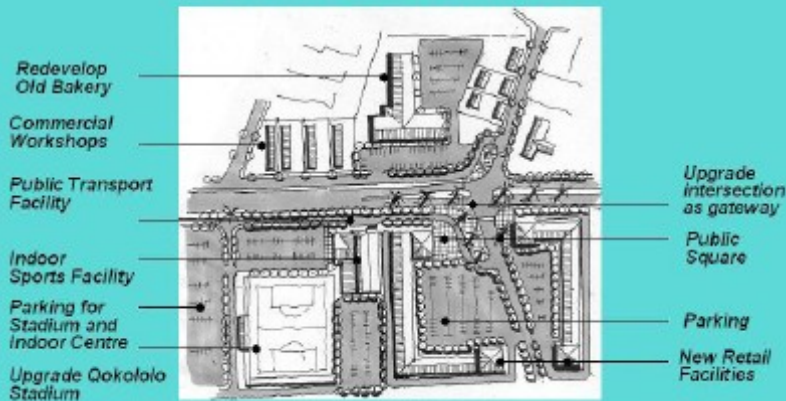
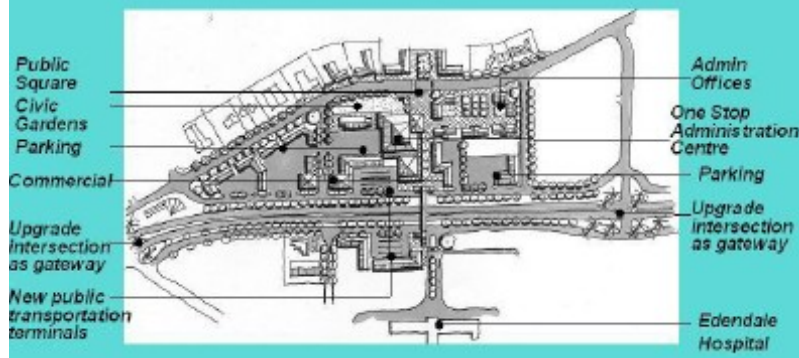


Qokololo Stadium Node



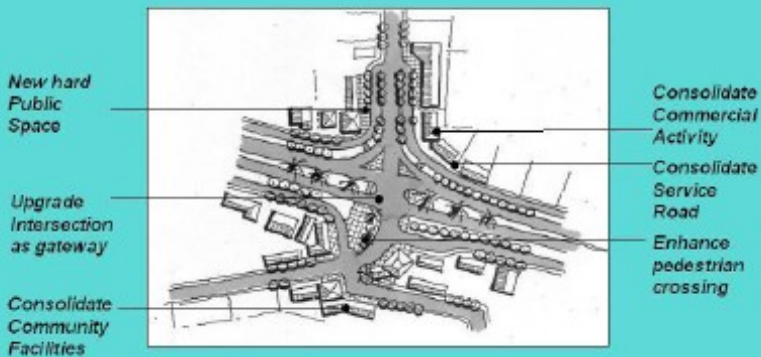
Hospital Node



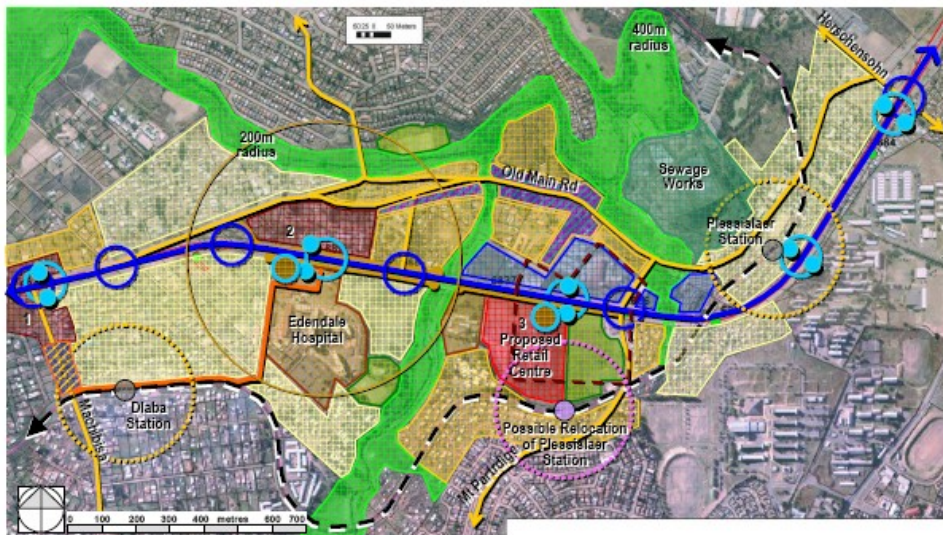
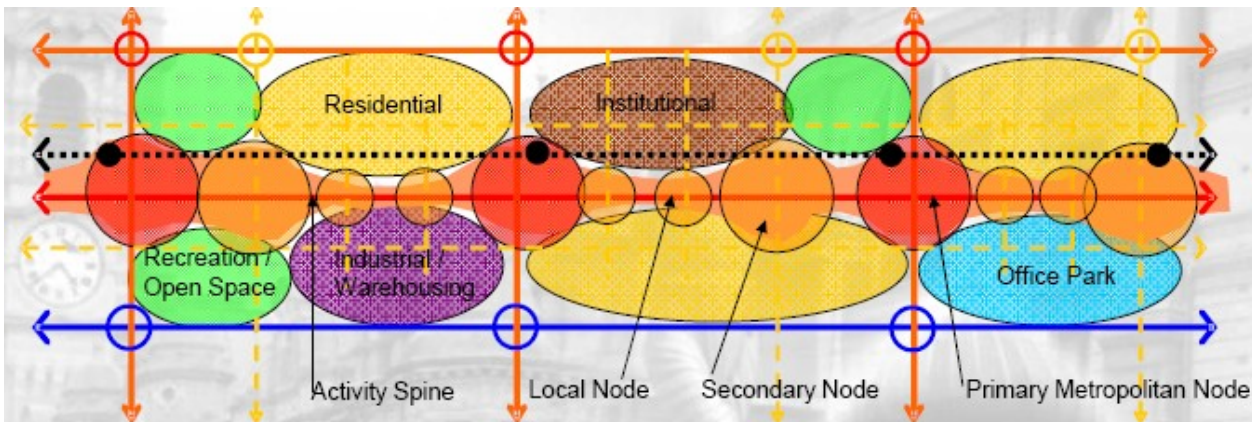
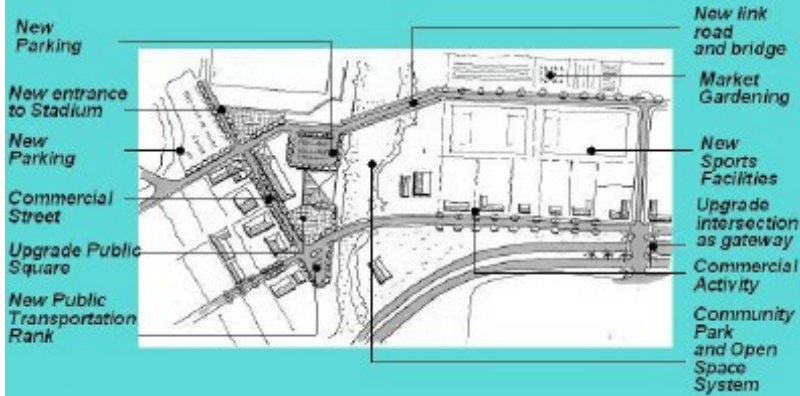
Machibisa Node



Caluza Node



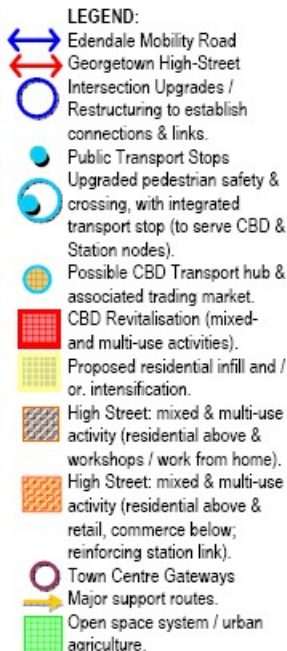
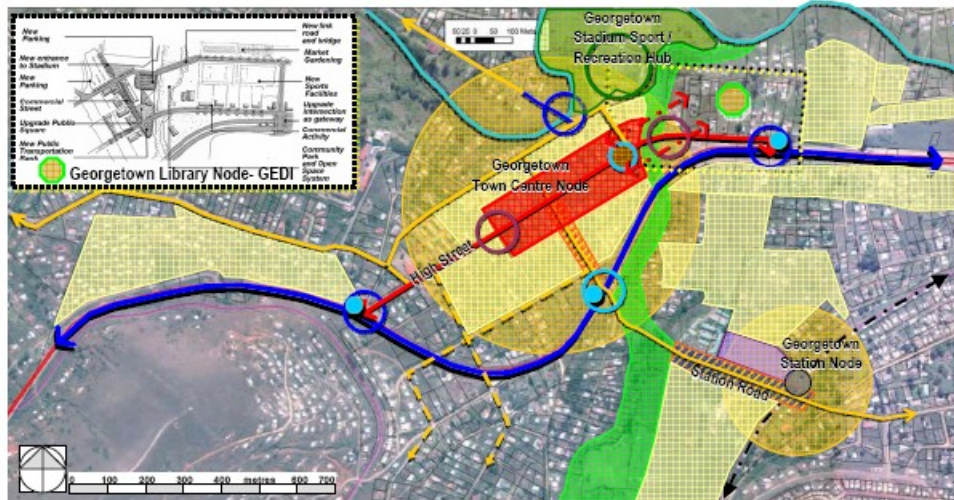
Georgetown Node



The Qokololo Stadium area, given the imminent relocation of the facility and the development of a retail centre, is the second Primary Node of the Edendale portion of the corridor. The mobility function of Edendale Road is retained by ensuring that activities are accessed & serviced from the major collector routes (such as Old Main Rd etc.). Activities along Edendale Road will not receive direct access, but gain access by the use of the service roads that are integrated into each development parcel. The Edendale Hospital Node serves as a secondary support node to the primary node, comprising mostly institutional & social activities / services. These include, as per the GEDI initiative, an administration centre, civic gardens, a public square & a few supporting commercial activities. The proposed station nodes are to support to the primary node (Qokololo) & the secondary nodes (Edendale Hospital & Machibisa). Edendale Rd is to be improved & upgraded with various public transport stops that service the area appropriately, and an improved pedestrian environment with regard to safety, comfort and convenience.

LEGEND:

- Edendale Mobility Road
- Major Collector Routes
- Machibisa Station Road Link & Upgrade with Hospital Node
- Restructuring to establish connections & links.
- Public Transport Stops
- Upgraded pedestrian safety & crossing, & transport stop.
- Public Transport Hub & associated trading market.
- Proposed retail centre
- Commercial / business
- Service industry
- Secondary Hospital Node; institutional & social activities
- GEDI Nodes (1: Machibisa; 2: Hospital & 3: Qokololo- see over page)
- High Street: mixed & multi-use activity (residential above & workshops / work from home); reinforcing station link.
- Residential intensification
- Residential infill
- Recreation activities
- Open space system.



Edendale Road functions as a mobility road, bypassing the Georgetown Town Centre, the historic origin of Edendale. In this regard it requires to support accessibility into Georgetown, various public transport stops that service the area appropriately, and an improved pedestrian environment with regard to safety, comfort and convenience. No activities are to front on to Edendale Road. The continued mobility function of the road is directed by the following aspects:

- It's relationship to the Georgetown Town Centre, providing sub-regional accessibility from the wider rural hinterland.
- It crosses Station Road, which is the link between Georgetown and its Station (an approximate distance of 900m).
- The GEDI initiative around the Library area, integrated with the Town Centre & review if required.
- Georgetown's role as a secondary node to the wider rural hinterland, forming the rural / urban threshold into Pietermaritzburg's urban area.