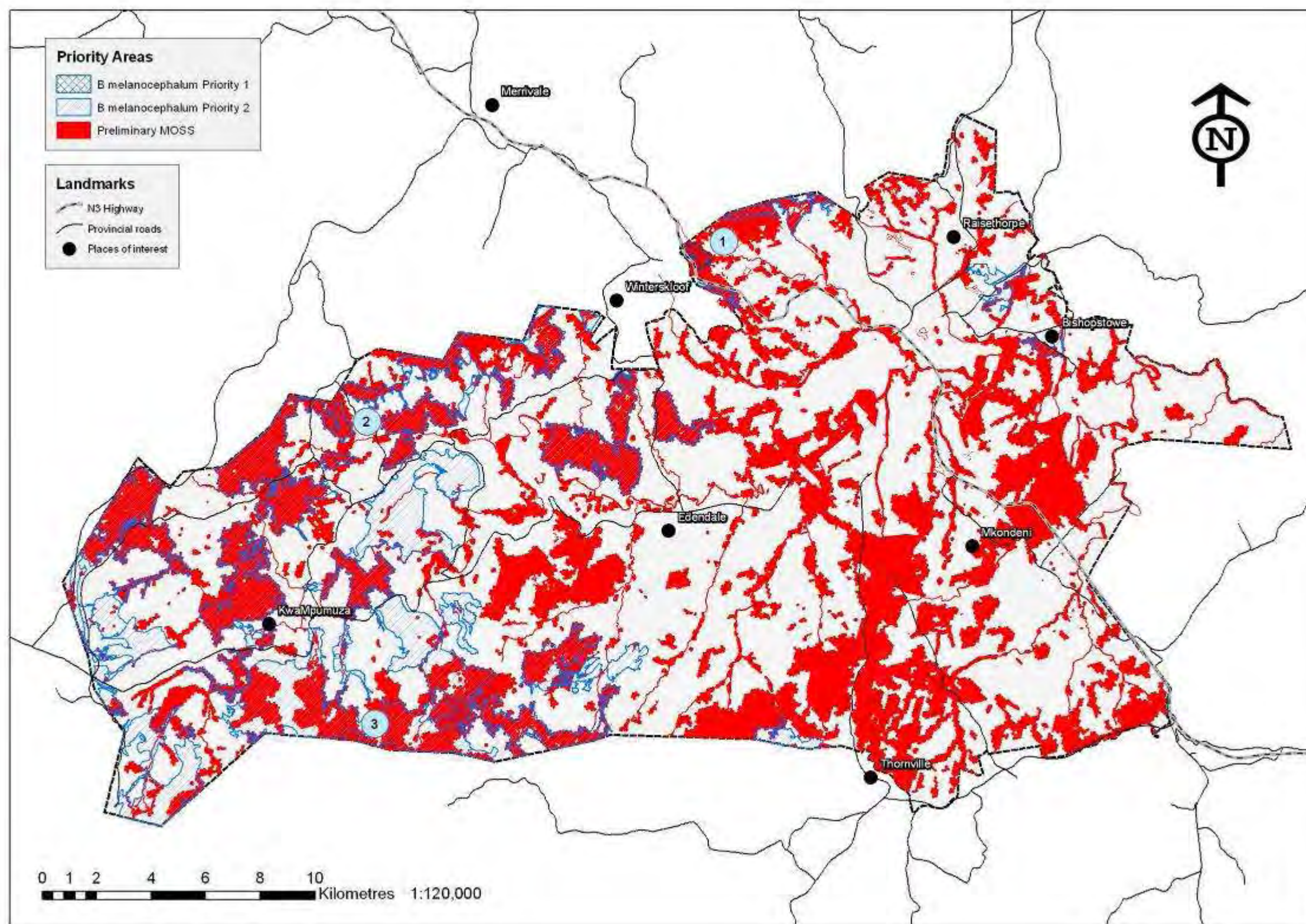
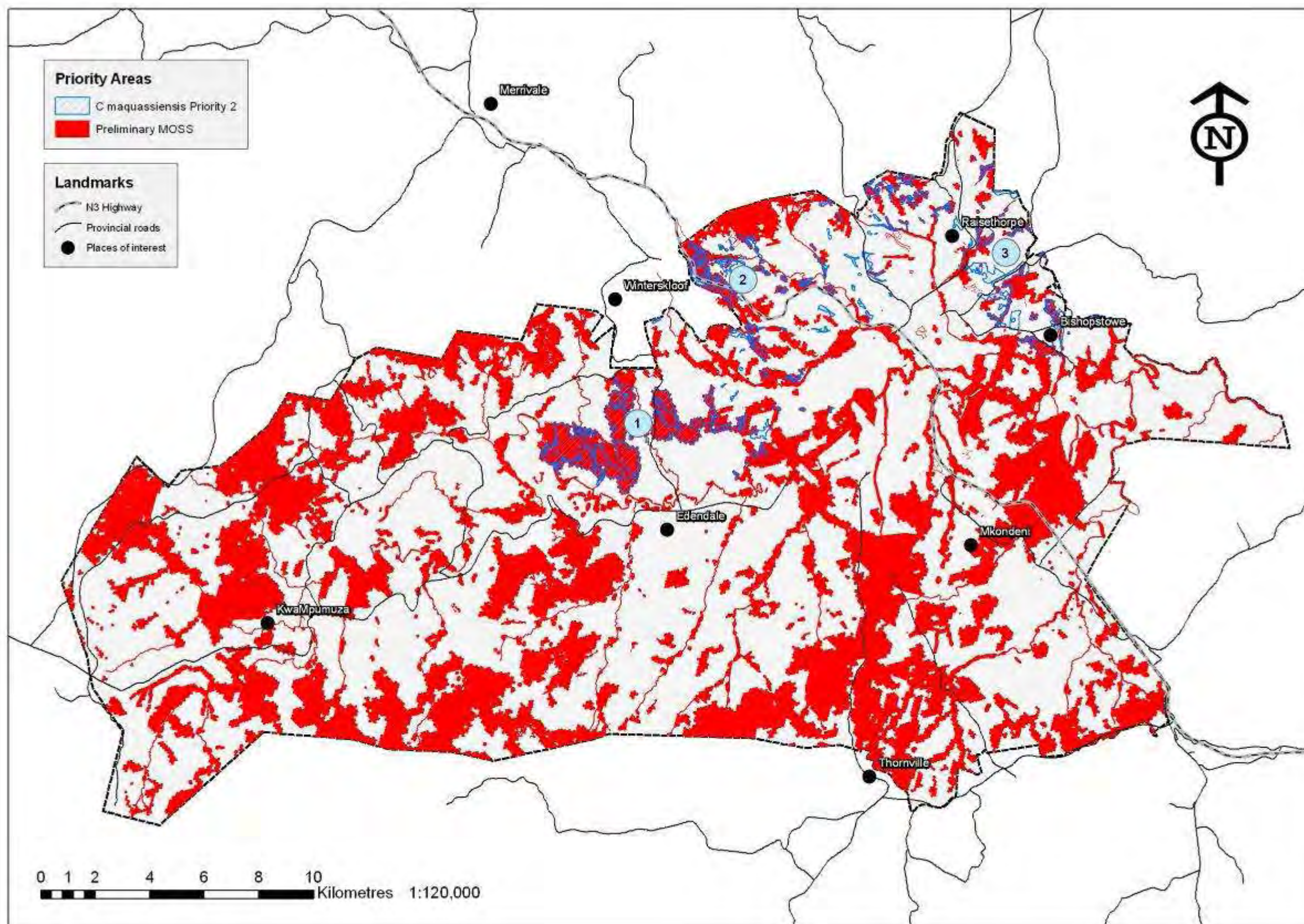


**Annexure2.** Species distribution maps used to assess the need for additional terrestrial corridors for priority species.



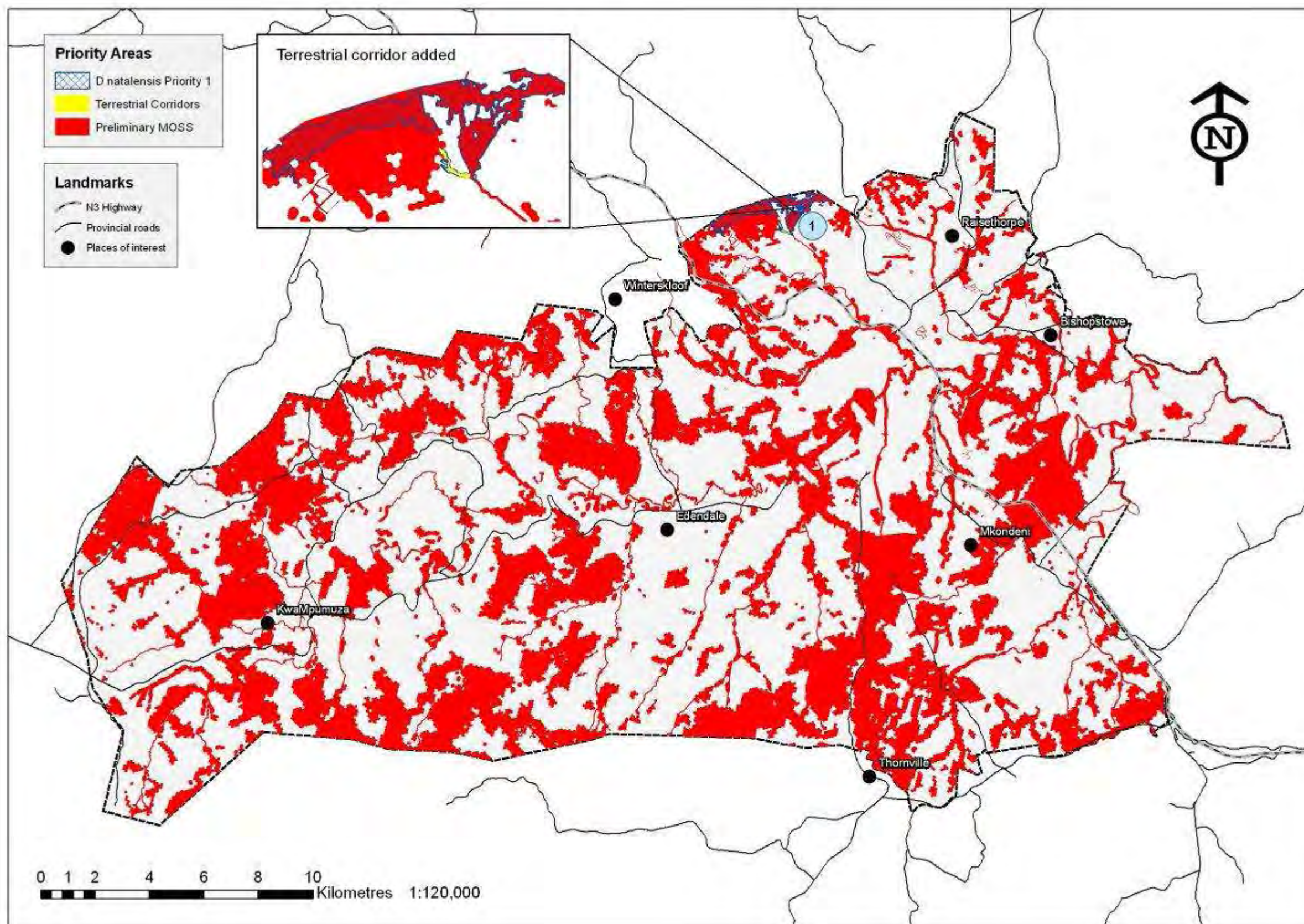
**Map 1:** Location of priority areas for the conservation of *Bradypodion melanocephalum* in relation to the preliminary ESP (excluding POS).





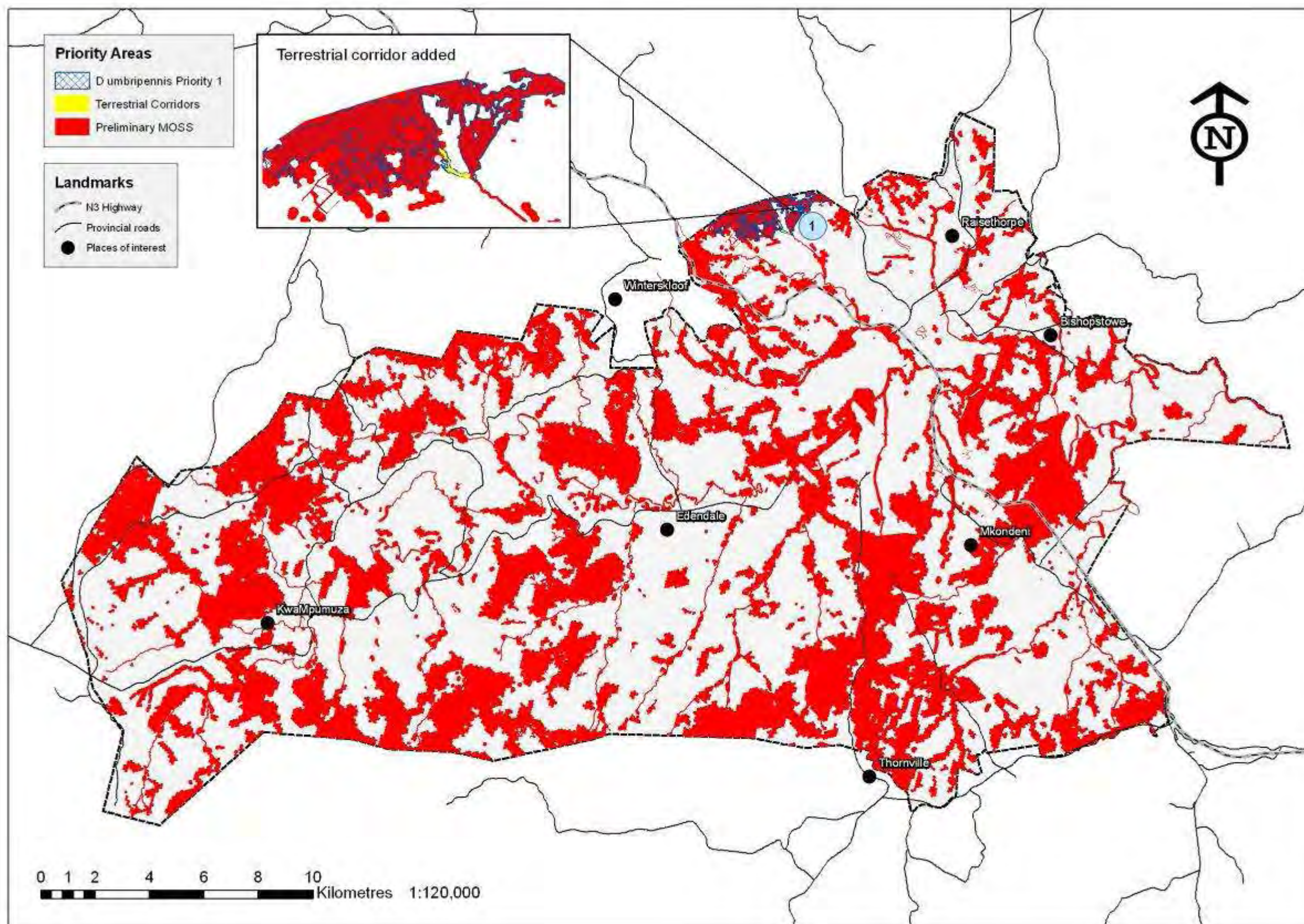
**Map 2:** Location of priority areas for the conservation of *Crocidura maquassiensis* in relation to the preliminary ESP (excluding POS).





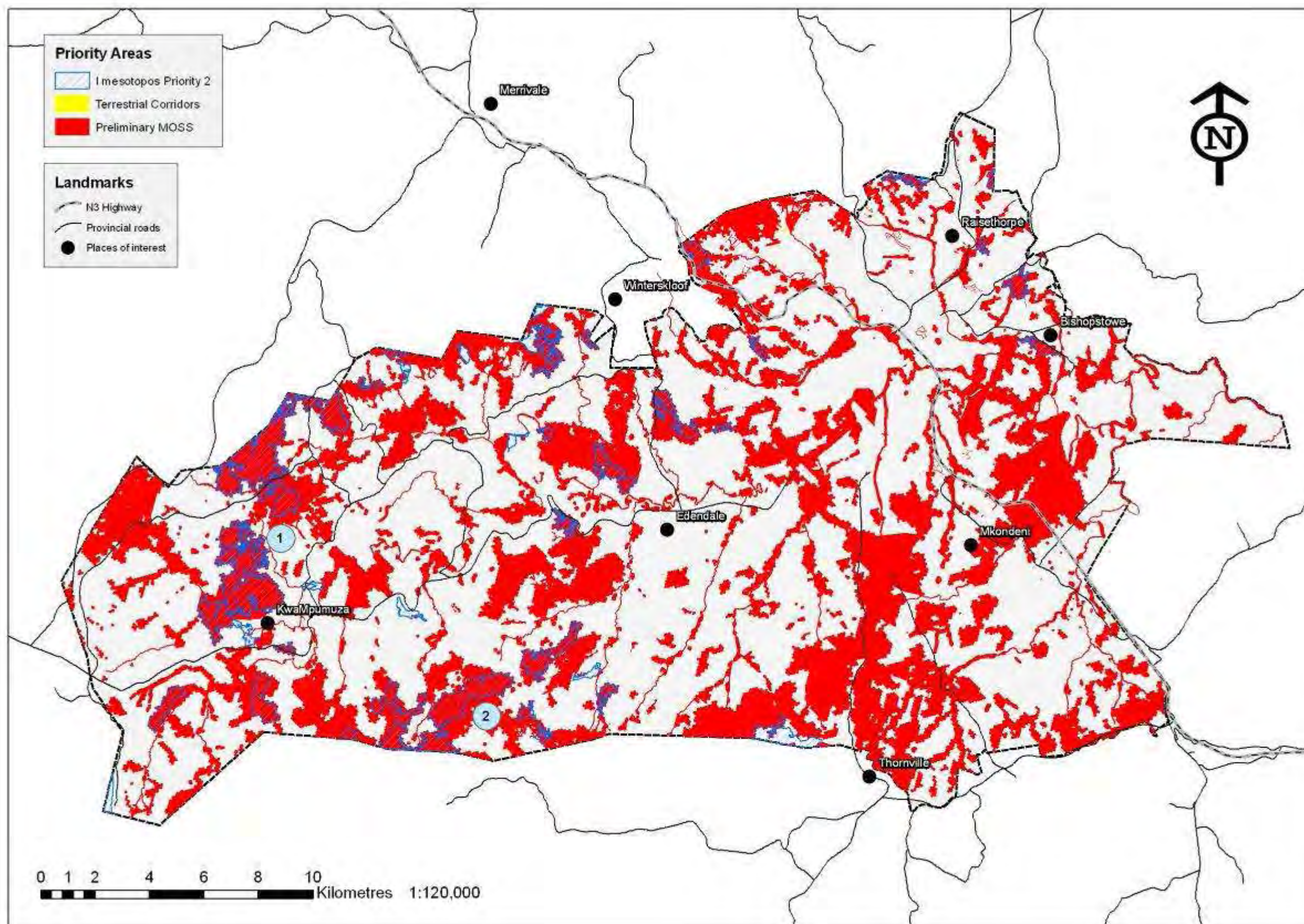
**Map 3:** Location of priority areas for the conservation of *Dasophrys natalensis* in relation to the preliminary ESP (excluding POS).





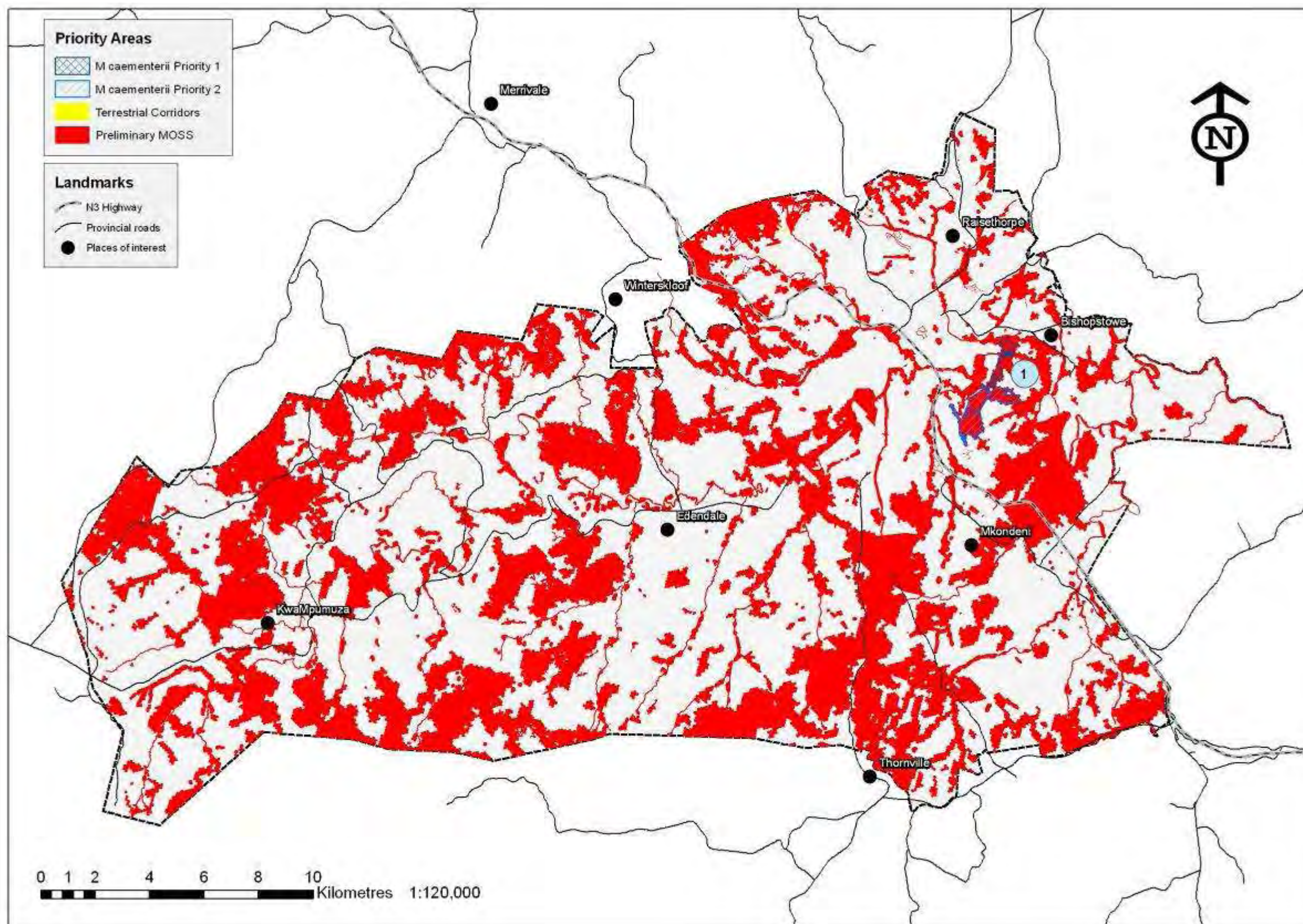
**Map 4:** Location of priority areas for the conservation of *Dasophrys umbripennis* in relation to the preliminary ESP (excluding POS).





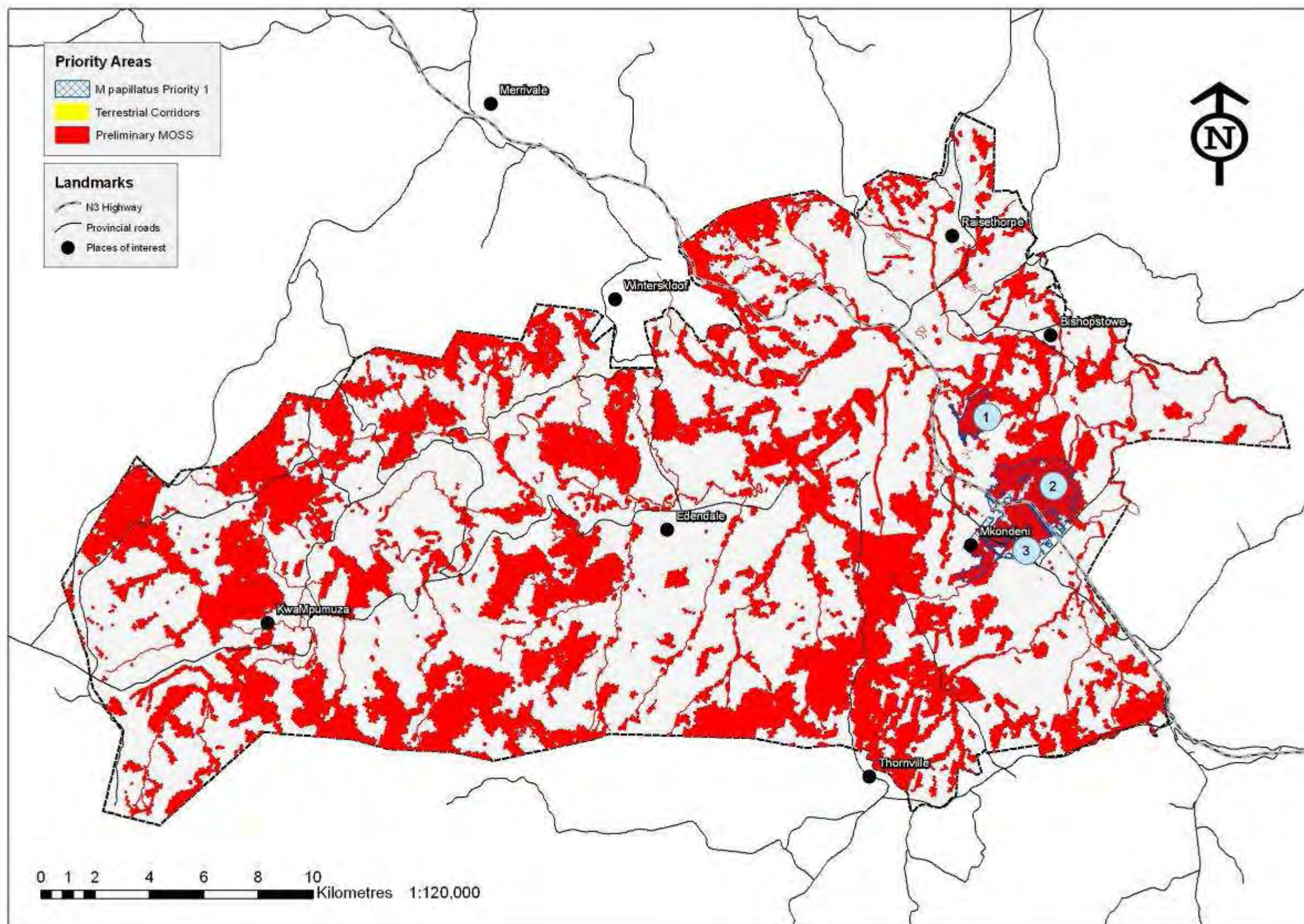
**Map 5:** Location of priority areas for the conservation of *Ischiolobos mesotopos* in relation to the preliminary ESP (excluding POS).





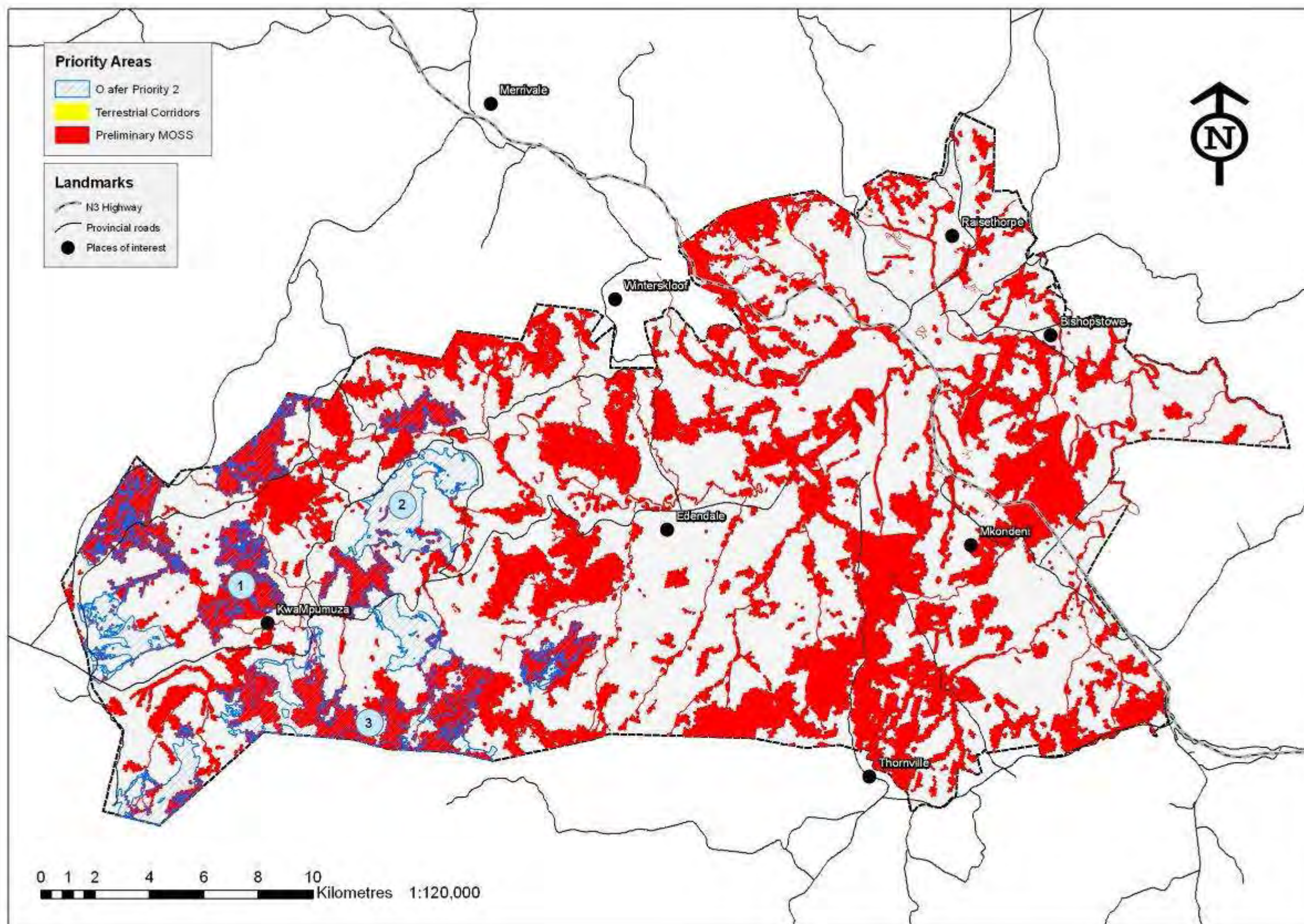
**Map 6:** Location of priority areas for the conservation of *Microchaetus caementarii* in relation to the preliminary ESP (excluding POS).





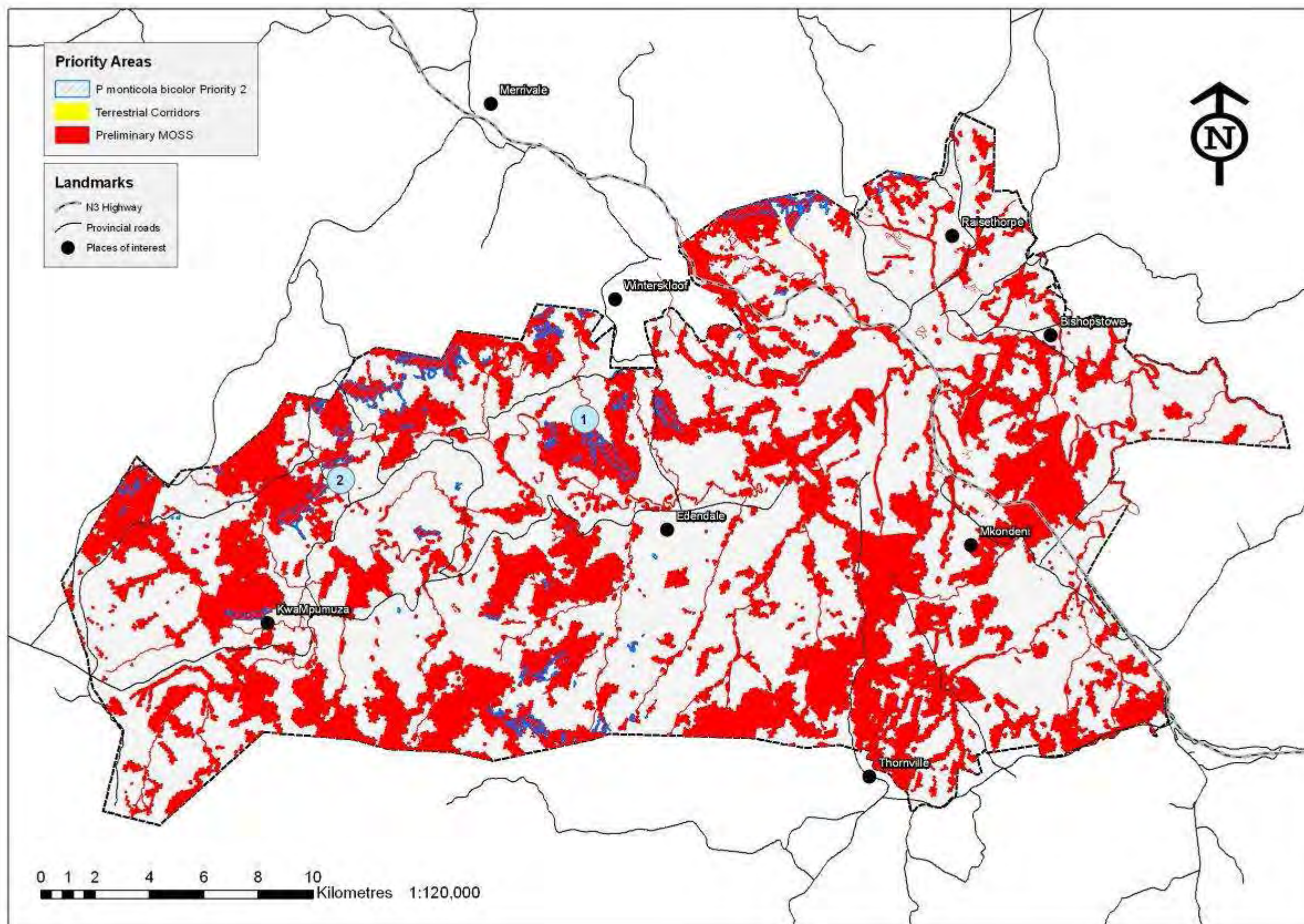
**Map 7:** Location of priority areas for the conservation of *Microchaetus papillatus* in relation to the preliminary ESP (excluding POS).





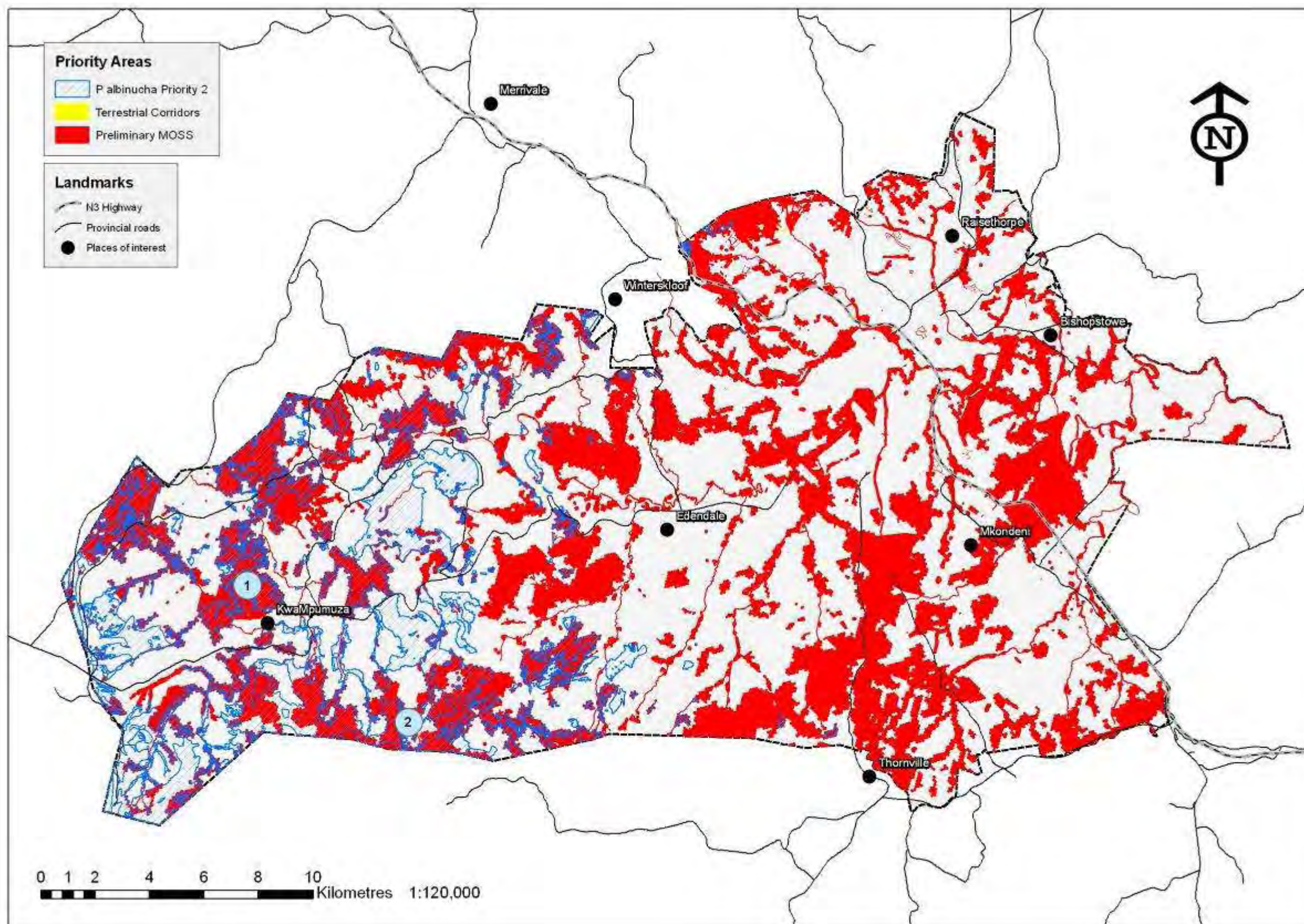
**Map 8:** Location of priority areas for the conservation of *Orycteropus afer* in relation to the preliminary ESP (excluding POS).





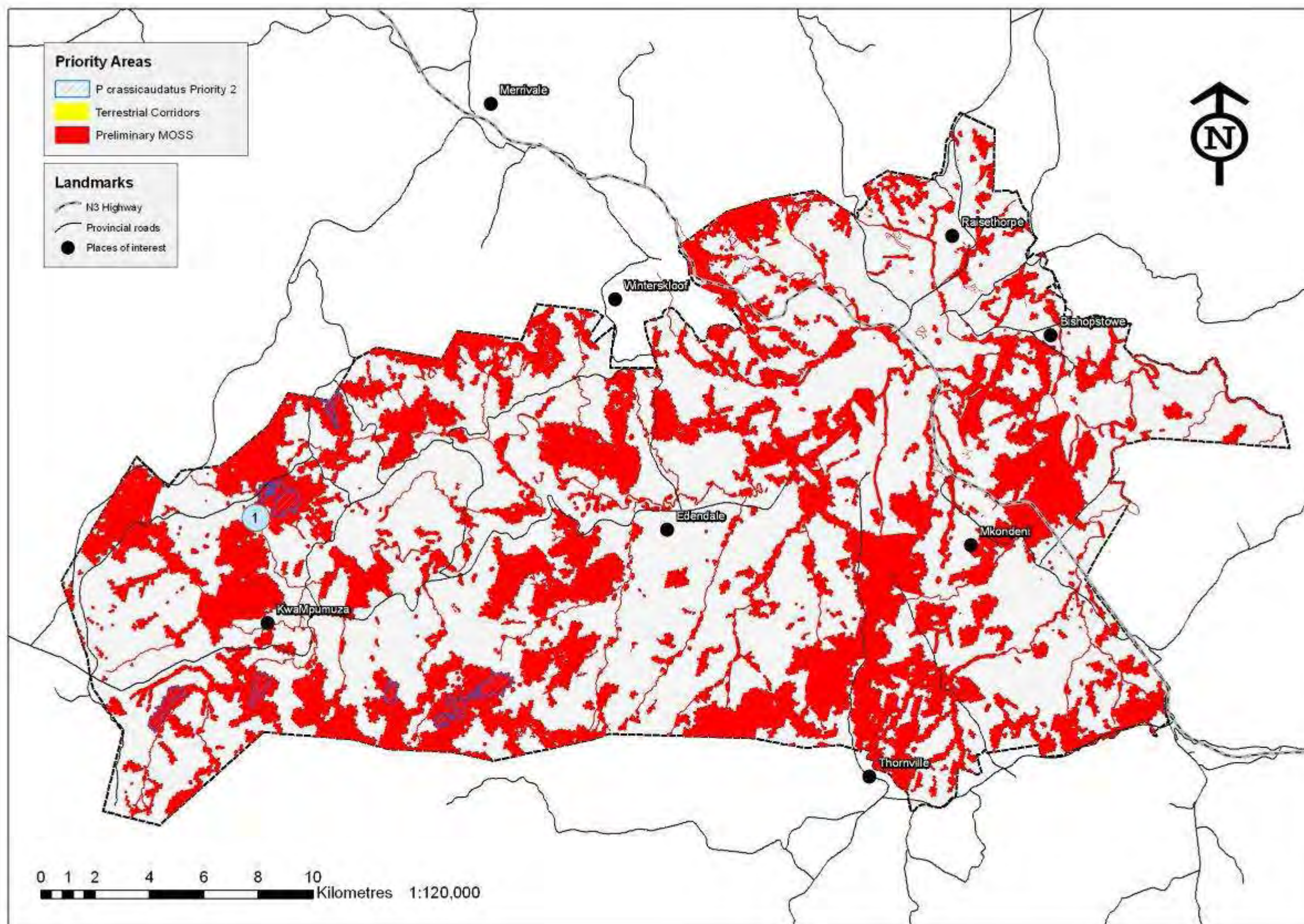
**Map 9:** Location of priority areas for the conservation of *Philantomba monticola bicolor* in relation to the preliminary ESP (excluding POS).





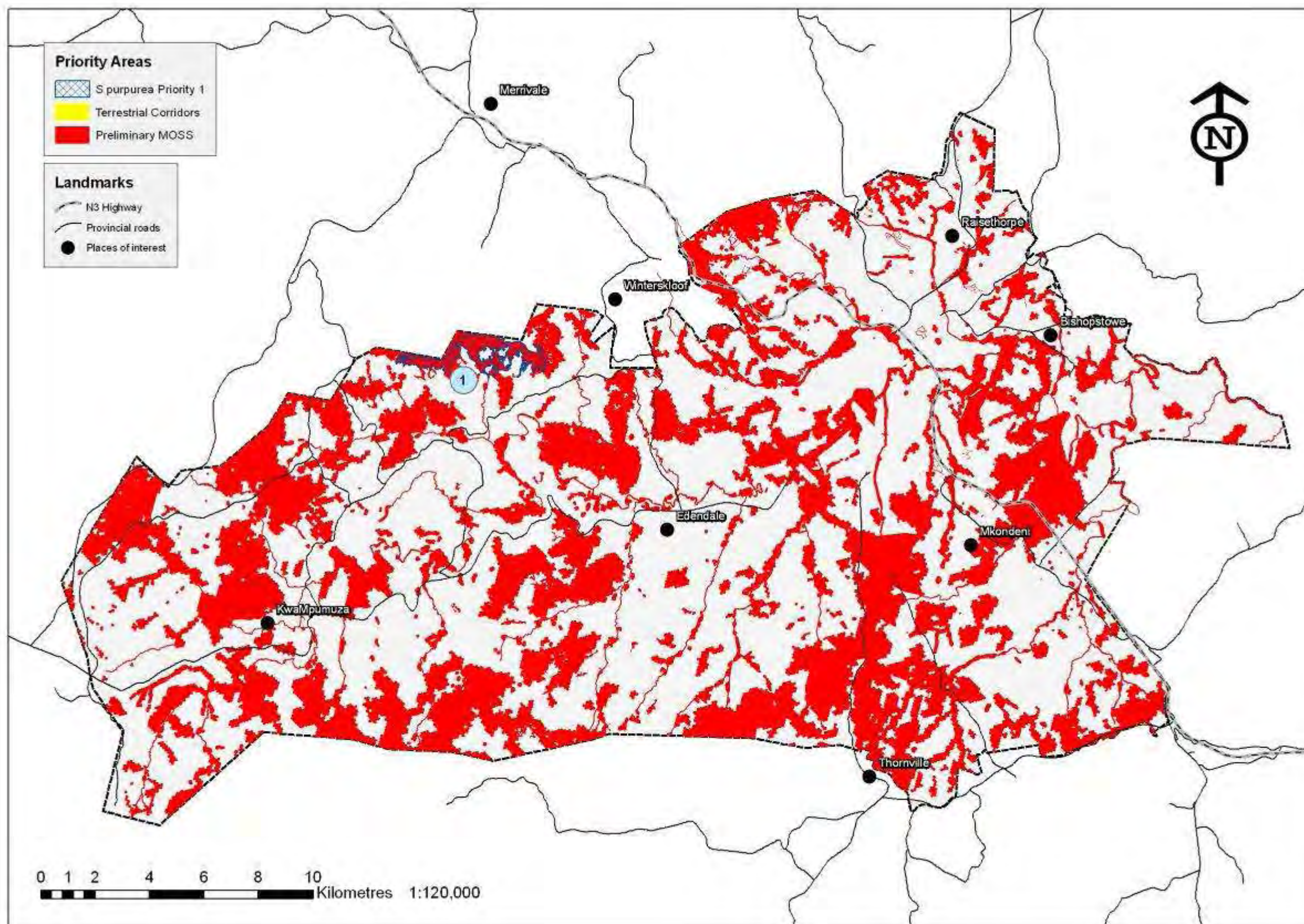
**Map 10:** Location of priority areas for the conservation of *Poecilogle albinucha* in relation to the preliminary ESP (excluding POS).





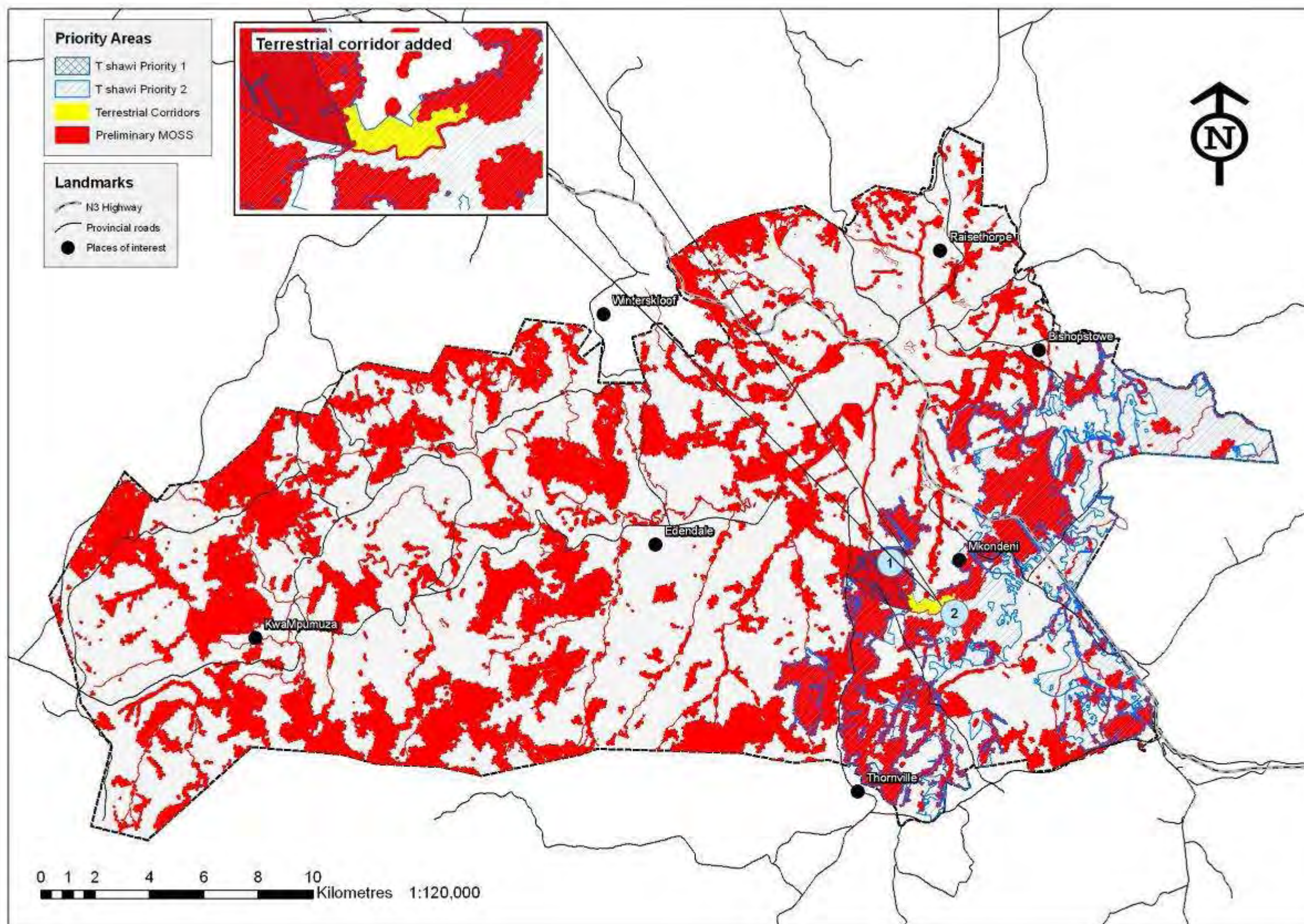
**Map 11:** Location of priority areas for the conservation of *Pronolagus crassicaudatus* in relation to the preliminary ESP (excluding POS).





**Map 12:** Location of priority areas for the conservation of *Stagira purpurea* in relation to the preliminary ESP (excluding POS).





**Map 13:** Location of priority areas for the conservation of *Tritogenia shawi* in relation to the preliminary ESP (excluding POS)



---

## **Appendix 2: Environmental Services Plan – Identification of Social Criteria**