

+3275250 X
+55000 Y

+3275500 X
+55000 Y

+3275750 X
+55000 Y

+3275250 X
+54750 Y

+3275500 X
+54750 Y

+3275750 X
+54750 Y

+3275250 X
+54500 Y

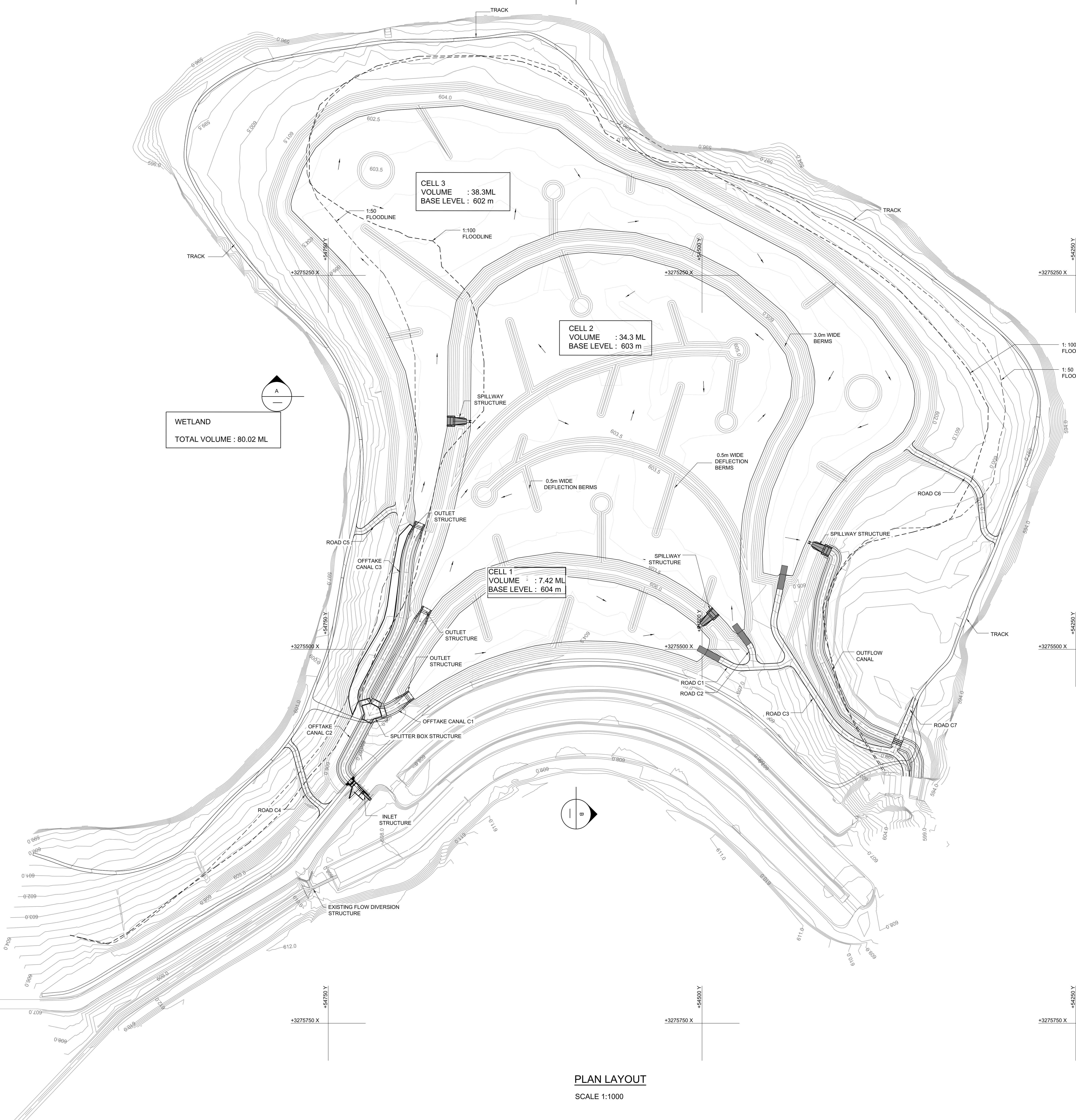
+3275500 X
+54500 Y

+3275750 X
+54500 Y

+3275250 X
+54250 Y

+3275500 X
+54250 Y

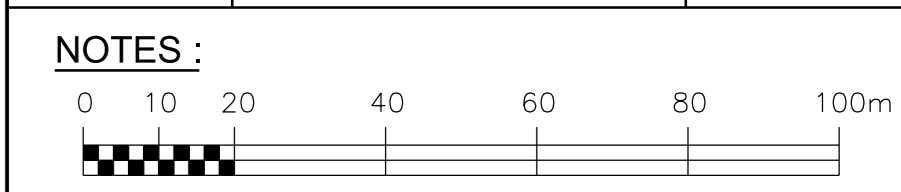
+3275750 X
+54250 Y



PLAN LAYOUT
SCALE 1:1000

REFERENCE DRAWINGS

DRAWING No.	TITLE/DESCRIPTION	SOURCE



REFERENCE DRAWINGS

- FOR TOWER DROP INLETS & SPILLWAY SECTIONS SEE DRAWING H121642-013-10-014-0002-001
- FOR INLET STRUCTURE DETAILS SEE DRAWING H121642-013-10-014-0003-001 & H121642-013-10-014-0003-002
- FOR OUTLET STRUCTURE DETAILS SEE DRAWING H121642-013-10-014-0005-001
- FOR OUTFALL CANAL CULVERT DETAILS SEE DRAWING H121642-013-10-014-0008-001
- FOR FLOW DIVERSION STRUCTURE DETAILS SEE DRAWING H121642-013-10-014-0006-001
- FOR RAMP DETAILS SEE DRAWING H121642-013-10-035-0003-001
- FOR CHANNEL DETAILS SEE DRAWING H121642-013-10-035-0003-001
- FOR CHANNEL LONGSECTION SEE DRAWING H121642-013-10-014-0004-001, -002, & -003
- FOR ROAD LONG SECTION AND LAYOUT SEE DRAWING H121642-013-10-014-0007-001, -002, -003, & -004

REV	DATE	DESCRIPTION	NAME	SIGNATURE	APPROVED
B	18/08/16	CLIENT REVIEW			
A	16/05/16	CLIENT REVIEW			

CONSULTING ENGINEER APPROVAL	
CONSULTING ENGINEER DRAWING No.	H121642-013-10-042-0001-001
DESIGNED	B.BVUMA
CHECKED	E. CARVALHO
STRUCTURAL ENGINEER	NR
ELECTRICAL ENGINEER	NR
APPROVED	J. SPRINLOD (PR NO. 96121)

UMGENI WATER APPROVAL		
ENGINEERING SERVICES		
DESIGN ENGINEER	NAME	SIGNATURE
ENGINEERING MANAGER	ALAN KOCKOTT	
OPERATIONS		
MAINTENANCE MANAGER	NAME	SIGNATURE
AREA MANAGER	ERIC NENE	
ASSET MANAGER	NTSIKI BAAI	
GENERAL MANAGER	EDNICK MSWELI	

UMGENI
Managing Water for Life
WATER • AMANZI

310 BURGER STREET
PIETERMARITZBURG
3201
TEL. (033) 341 1111

DARVILL SPW EXTENSIONS

WETLAND CREATION
PROPOSED WETLAND AREA
GENERAL ARRANGEMENT

FILE No.	SCALE	SHEET SIZE	SHEET
	AS SHOWN	A0	1 OF 1
CONTRACT No.	DRAWING No.	REVISION	
2013/136		B	