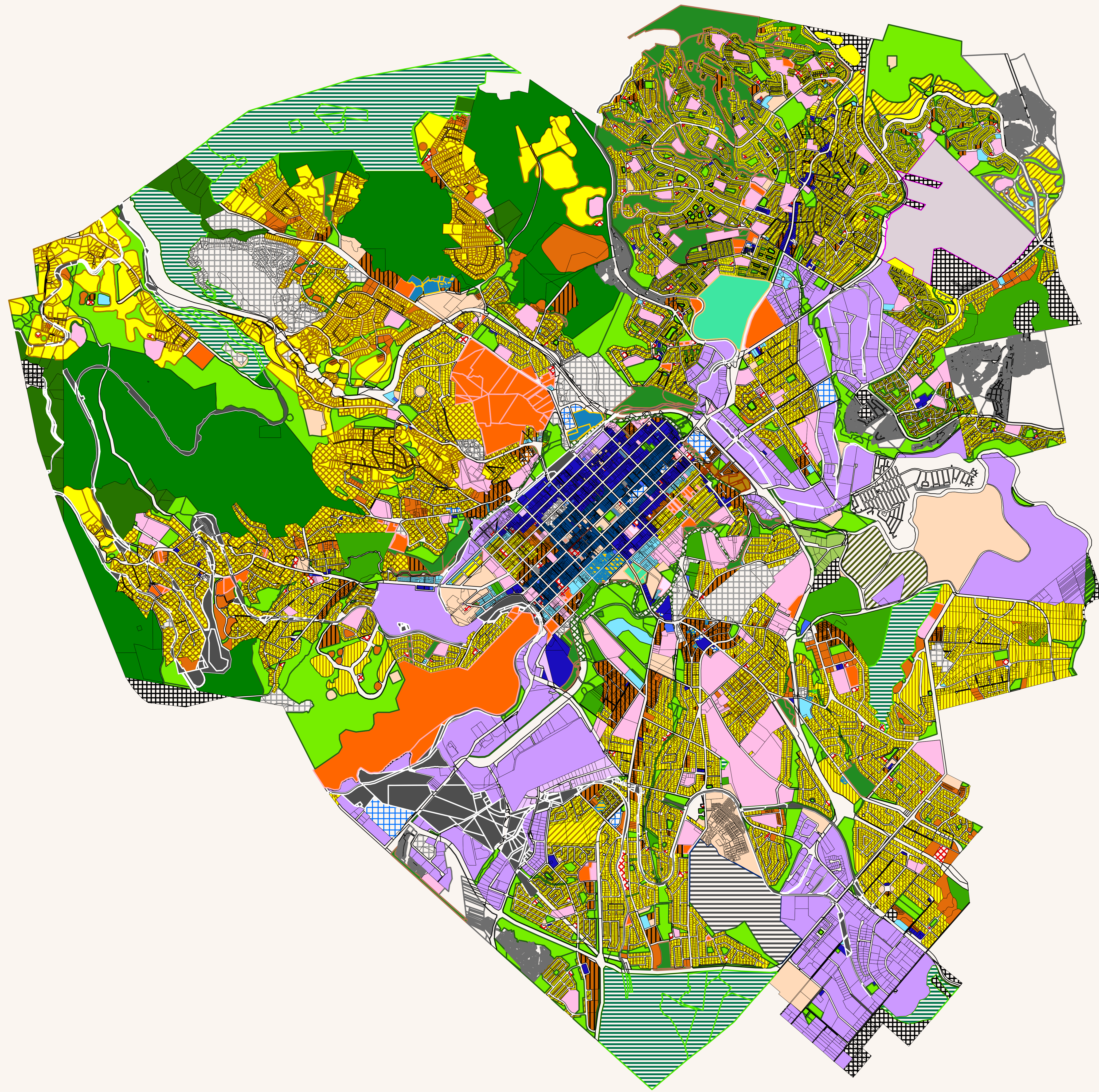


THE MSUNDUZI LOCAL MUNICIPALITY

**AREA
(KWAZULU NATAL/
MGUNGUNDLOVU DM)**

**DRAFT LAND USE SCHEME
MAP: PIETERMARITZBURG**

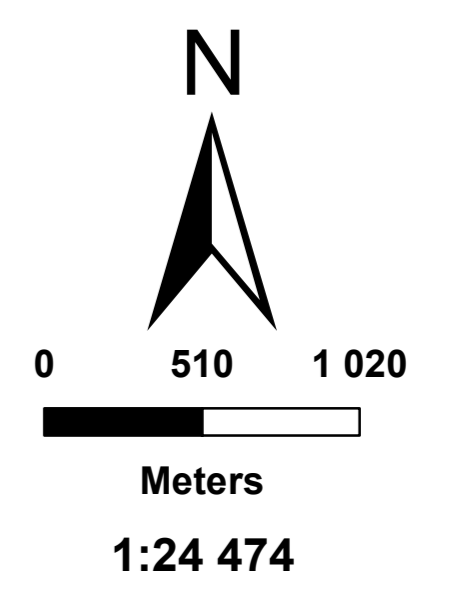


Legend

- Land Use Zone**
- Active Public Open Space
 - Agriculture 1
 - Agriculture 2
 - Airport
 - Bus and Taxi Rank
 - Car Park
 - Cemetery
 - Core Mixed Use 1
 - DFA
 - Educational
 - Environmental Reservation
 - Existing Road and Lane (Reservation)
 - Extractive Industry
 - Forestry
 - Garage and Petrol Filling Station
 - General
 - General Industry
 - General Residential 1
 - General Residential 2
 - General Residential 3
 - Health and Welfare
 - Institutional
 - Intermediate Residential
 - LFTEA
 - Light Industry
 - Low Impact Mixed Use
 - Medium Impact Mixed Use
 - Multi-Purpose Retail and Office
 - Municipal and Government
 - Office
 - Passive Public Open Space
 - Pedestrian Mall
 - Private Open Space
 - Protected Area 1
 - Railway Purposes (Reservation)
 - Rapid Urbanisation Management Zone
 - Rear Access Lane
 - Refuse Landfill
 - Special Area
 - Special Business Area
 - Special Residential 1
 - Special Residential 2
 - Special Residential 3
 - Special Residential 4
 - Special Residential 5
 - Undetermined
 - Utilities and Services 1
 - Worship

SOURCE:
Msunduzi Municipality

1:24 474



Map Reference	Prepared By	Date
LUS/06/17/002/P	ZM	October 2017

"COPYRIGHT IS VESTED IN SIVEST IN TERMS OF THE COPYRIGHT ACT (ACT 98 OF 1978) AND NO USE OR REPRODUCTION OR DUPLICATION THEREOF MAY OCCUR WITHOUT THE WRITTEN CONSENT OF THE AUTHOR"

THIS MAP HAS BEEN PREPARED UNDER THE CONTROLS ESTABLISHED BY THE SIVEST QUALITY MANAGEMENT SYSTEM AND MEETS THE REQUIREMENTS OF THE SETA QUALITY GRADING SYSTEM THAT IS ISO COMPLIANT

