

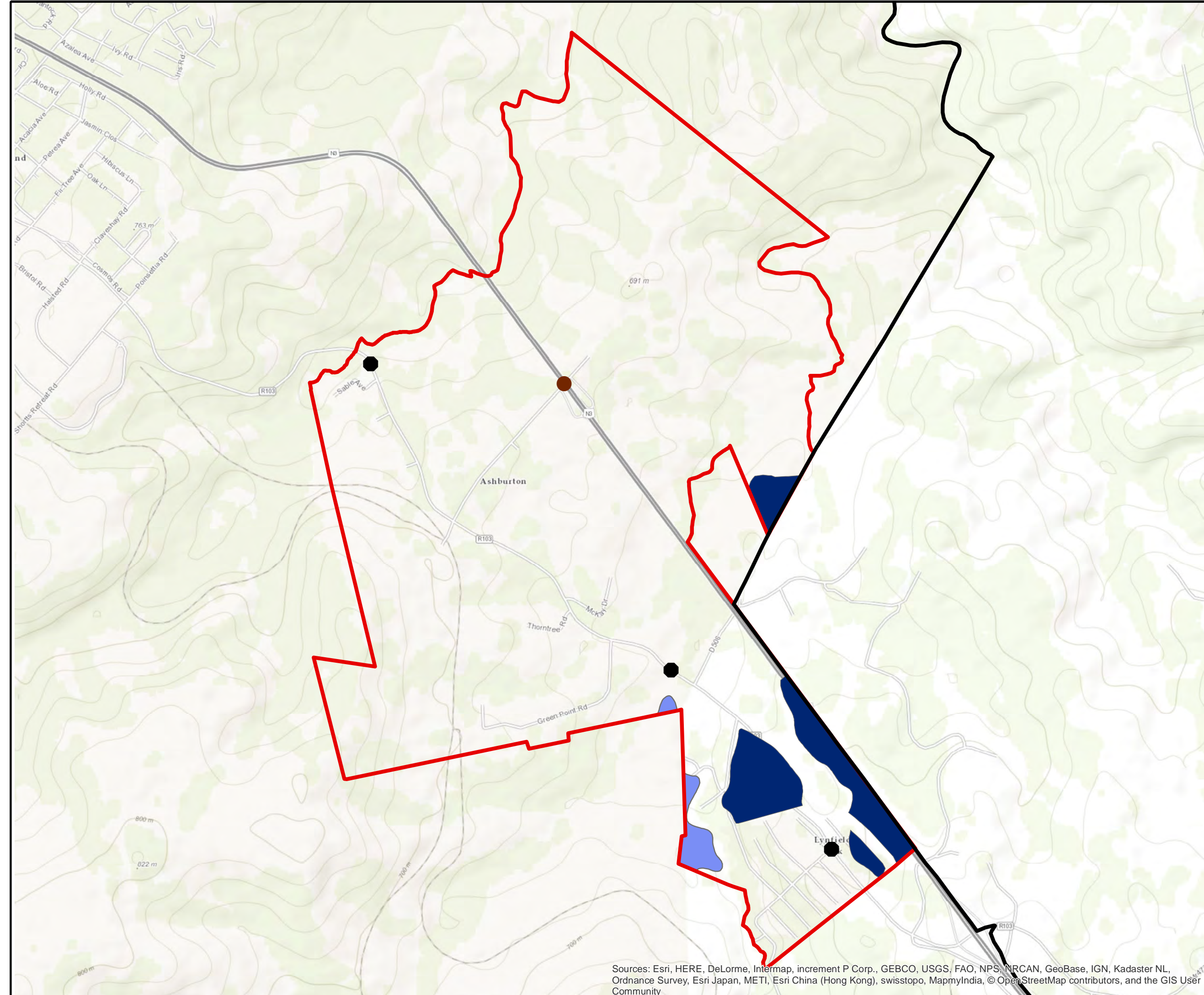
THE MSUNDUZI LOCAL MUNICIPALITY

AREA  
(KWAZULU NATAL/  
MGUNGU DLOVU DM)

LAND USE MANAGEMENT  
OVERLAY (LUMO)

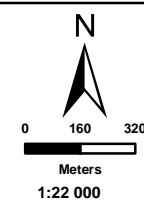
**Legend**

-  Municipal Boundary
  -  Project Boundary
  -  Key Centres
  -  Sustainable Urban Centres
- SDF: Proposed Land Use
-  Logistics/Business
  -  Tourism



SOURCE:  
Msunduzi Municipality  
ARC GIS

1:22 000



TOWN PLANNING DIVISION  
4 PENCARROW CRESCENT  
LA LUCIA RIDGE OFFICE ESTATE  
UMHLANGA ROCKS  
4320

Phone: +27 31 581 1500  
Fax: +27 31 566 2371  
e-mail: info@sivest.co.za

Map Reference	Prepared By	Date
LUMO/044/18	ZM	February 2018

\*COPYRIGHT IS VESTED IN SIVEST IN TERMS OF THE COPYRIGHT ACT (ACT 98 OF 1978) AND NO USE OR REPRODUCTION OR DUPLICATION THEREOF MAY OCCUR WITHOUT THE WRITTEN CONSENT OF THE AUTHOR\*

Sources: Esri, HERE, DeLorme, Intermap, increment P Corp., GEBCO, USGS, FAO, NPS, NRCAN, GeoBase, IGN, Kadaster NL, Ordnance Survey, Esri Japan, METI, Esri China (Hong Kong), swisstopo, MapmyIndia, © OpenStreetMap contributors, and the GIS User Community

THIS MAP HAS BEEN PREPARED UNDER THE CONTROLS ESTABLISHED BY THE SIVEST QUALITY MANAGEMENT SYSTEM AND MEETS THE REQUIREMENTS OF THE SETA QUALITY GRADING SYSTEM THAT IS ISO COMPLIANT